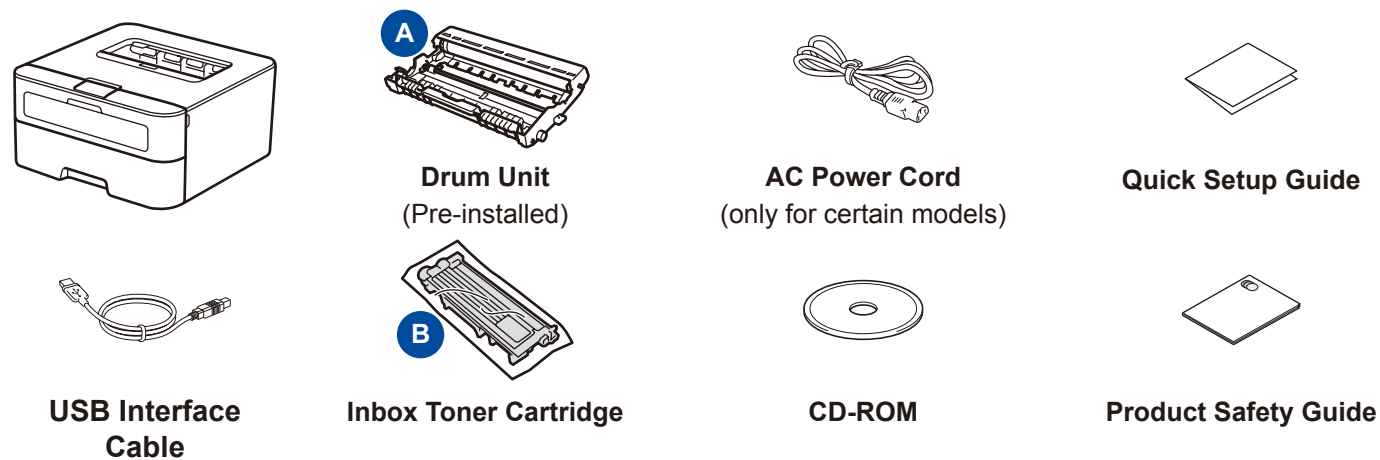


## Unpack the machine and check the components



Read the Product Safety Guide first, then read this Quick Setup Guide for the correct installation procedure.

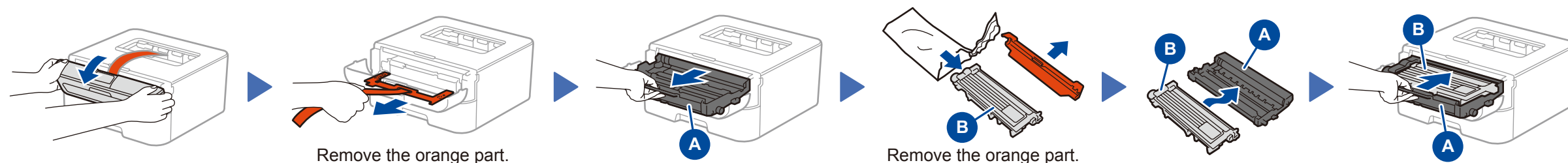
**NOTE:**

The illustrations in this Quick Setup Guide are based on the LJ2455D.

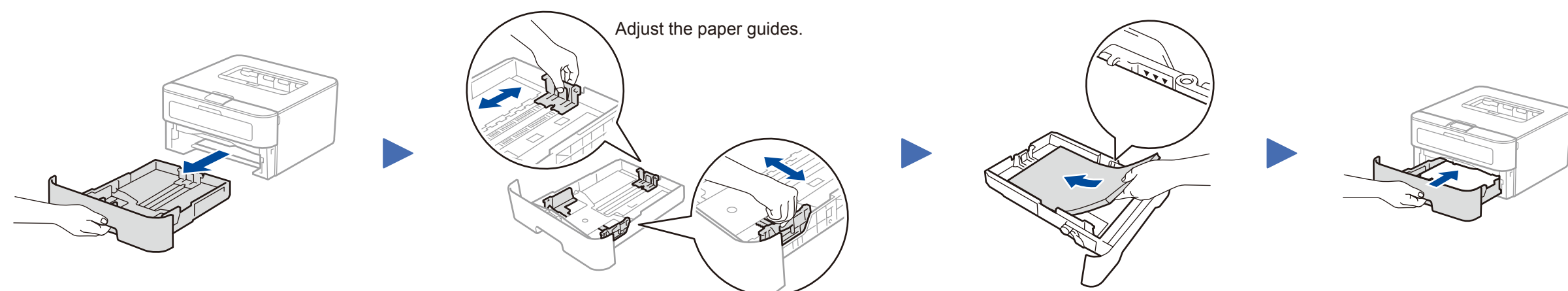
**USB cable**

We recommend using a USB 2.0 cable (Type A/B) that is no more than 2 meters.

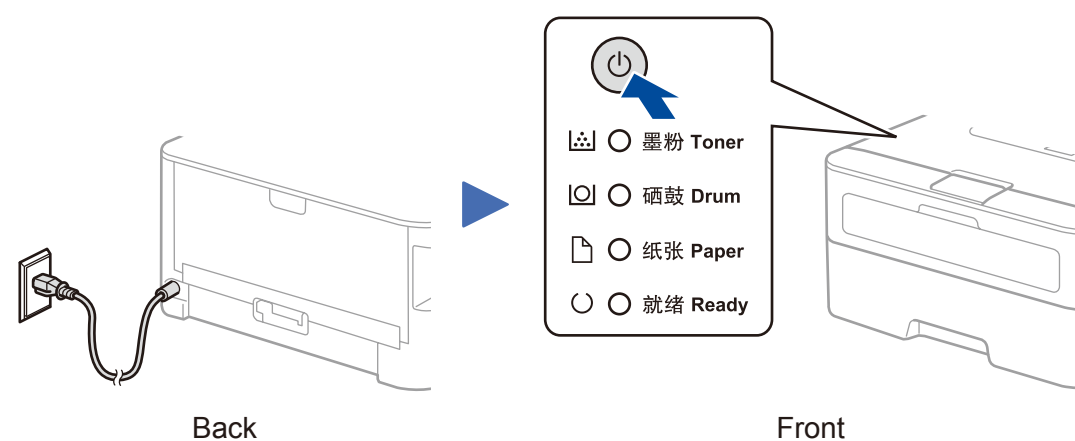
## 1 Remove the packing materials and install the toner cartridge



## 2 Load paper in the paper tray



## 3 Connect the power cord and turn on the machine



## Printer LED Indications

Blinking: ☀ ON: ● or ● OFF: ○

	Toner Low <sup>1</sup>	Replace Toner	Drum End Soon <sup>1</sup>	Replace Drum	Drum <sup>1 2</sup>	Paper Jam / Cover is Open <sup>2</sup>	No Paper
Toner	☀	●	○	○	○	○	○
Drum	○	○	☀	●	☀	○	○
Paper	○	○	○	○	○	☀	●
Ready	●	○	●	●	○	○	○

<sup>1</sup> The yellow LED will blink in a pattern of ON for 2 seconds and then OFF for 3 seconds.

<sup>2</sup> The LED will blink ON and OFF at 0.5 second intervals.

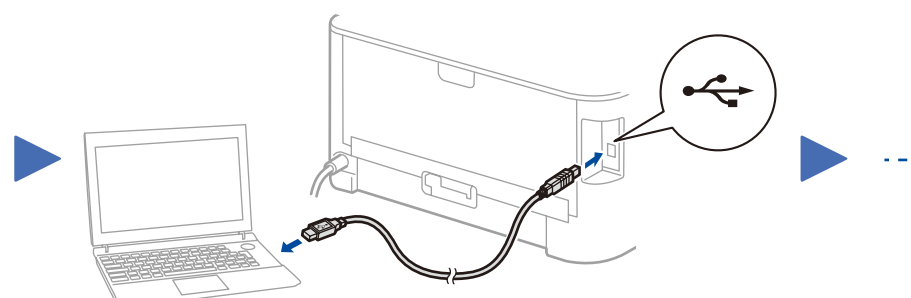
## 4A Configuration using the CD-ROM (Windows®)



Follow the on-screen instructions until the **Connect the machine** screen appears.

**NOTE:**

If the Lenovo screen does not appear automatically, go to **Computer (My Computer)**. (For Windows® 8: click the **File Explorer** icon on the taskbar, and then go to **Computer**.) Double-click the CD-ROM icon, and then double-click **start.exe**.



Follow the on-screen instructions to continue installation.

**Finish**

**NOTE:**

If connection is unsuccessful, repeat this step.

## 4B Configuration without using the CD-ROM (Windows® without CD-ROM drive or Macintosh)

You can download the latest device driver for free from the Lenovo Support Website, enabling you to use your Lenovo machine as a printer. Visit us at <http://www.lenovo.com/>.