



# 在线手册

My Image Garden 指南

中文(简体) (Chinese (Simplified))

# 目录

该文档中使用的符号.....	3
已启用触摸功能的设备用户 (Windows).....	4
商标和许可协议.....	5
My Image Garden 指南.....	16
什么是 My Image Garden? .....	17
My Image Garden 功能.....	18
选择图像、PDF 文件和视频.....	22
启动 My Image Garden.....	28
打印.....	29
打印照片和文档.....	30
打印光盘标签(CD/DVD/BD).....	33
创建和打印项目.....	38
以多种布局打印照片.....	41
使用多种功能.....	45
扫描照片和文档.....	46
使用自动扫描轻松扫描.....	47
扫描照片.....	50
扫描文档.....	53
使用收藏夹设置扫描.....	56
修正/增强照片.....	59
裁剪照片.....	62
创建/编辑 PDF 文件.....	64
从图像中提取文本(OCR 功能).....	66
故障排除.....	67

## 该文档中使用的符号

### 警告

如果忽略说明，可能会由于不正确的设备操作而导致死亡或严重的人身伤害。为安全操作必须注意该说明。

### 注意

如果忽略说明，可能会由于不正确的设备操作而导致人身伤害或器材损坏。为安全操作必须注意该说明。

### 重要事项

包含重要信息的用法说明。要避免机器损坏、人身伤害或不正当使用本产品，请务必阅读这些指示。

### 注释

该说明包括对于操作和其他解释的注意事项。

### 基础

介绍产品基本操作的说明。

### 注释

- 根据产品，图标可能会有所不同。

## 已启用触摸功能的设备用户 (Windows)

对于触摸操作，需要使用操作系统中设置的操作替换本文档中的“右键单击”。例如，如果操作系统中设置的操作为“按住”，请将“右键单击”替换为“按住”。

## 商标和许可协议

- Microsoft 是 Microsoft Corporation 的注册商标。
- Windows 是 Microsoft Corporation 在美国和/或其他国家/地区的商标或注册商标。
- Windows Vista 是 Microsoft Corporation 在美国和/或其他国家/地区的商标或注册商标。
- Internet Explorer 是 Microsoft Corporation 在美国和/或其他国家/地区的商标或注册商标。
- Mac、Mac OS、AirPort、App Store、AirPrint、AirPrint 徽标、Safari、Bonjour、iPad、iPhone 和 iPod touch 是 Apple Inc.在美国和其他国家/地区注册的商标。macOS 是 Apple Inc.的商标。
- IOS 是 Cisco 在美国和其他国家/地区的商标或注册商标，在许可下使用。
- Google Cloud Print、Google Chrome、Chrome OS、Chromebook、Android、Google Play、Google Drive、Google Apps 和 Google Analytics 是 Google Inc.的注册商标或商标。
- Adobe、Flash、Photoshop、Photoshop Elements、Lightroom、Adobe RGB 和 Adobe RGB (1998)是 Adobe Systems Incorporated 在美国和/或其他国家/地区的注册商标或商标。
- Bluetooth 是 Bluetooth SIG, Inc., U.S.A.的商标并授权给 Canon Inc.
- Autodesk 和 AutoCAD 是 Autodesk, Inc.和/或其子公司和/或其关联公司在美国和/或其他国家/地区的注册商标或商标。

### »» 注释

- Windows Vista 的正式名称为 Microsoft Windows Vista 操作系统。

Copyright (c) 2003-2015 Apple Inc. All rights reserved.

Redistribution and use in source and binary forms, with or without modification, are permitted provided that the following conditions are met:

1. Redistributions of source code must retain the above copyright notice, this list of conditions and the following disclaimer.
2. Redistributions in binary form must reproduce the above copyright notice, this list of conditions and the following disclaimer in the documentation and/or other materials provided with the distribution.
3. Neither the name of Apple Inc. ("Apple") nor the names of its contributors may be used to endorse or promote products derived from this software without specific prior written permission.

THIS SOFTWARE IS PROVIDED BY APPLE AND ITS CONTRIBUTORS "AS IS" AND ANY EXPRESS OR IMPLIED WARRANTIES, INCLUDING, BUT NOT LIMITED TO, THE IMPLIED WARRANTIES OF MERCHANTABILITY AND FITNESS FOR A PARTICULAR PURPOSE ARE DISCLAIMED. IN NO EVENT SHALL APPLE OR ITS CONTRIBUTORS BE LIABLE FOR ANY DIRECT, INDIRECT, INCIDENTAL, SPECIAL, EXEMPLARY, OR CONSEQUENTIAL DAMAGES (INCLUDING, BUT NOT LIMITED TO, PROCUREMENT OF SUBSTITUTE GOODS OR SERVICES; LOSS OF USE, DATA, OR PROFITS; OR BUSINESS INTERRUPTION) HOWEVER CAUSED AND ON ANY THEORY OF LIABILITY, WHETHER IN CONTRACT, STRICT LIABILITY, OR TORT (INCLUDING NEGLIGENCE OR OTHERWISE) ARISING IN ANY WAY OUT OF THE USE OF THIS SOFTWARE, EVEN IF ADVISED OF THE POSSIBILITY OF SUCH DAMAGE.

Apache License

Version 2.0, January 2004

<http://www.apache.org/licenses/>

TERMS AND CONDITIONS FOR USE, REPRODUCTION, AND DISTRIBUTION

1. Definitions.

"License" shall mean the terms and conditions for use, reproduction, and distribution as defined by Sections 1 through 9 of this document.

"Licensor" shall mean the copyright owner or entity authorized by the copyright owner that is granting the License.

"Legal Entity" shall mean the union of the acting entity and all other entities that control, are controlled by, or are under common control with that entity. For the purposes of this definition, "control" means (i) the power, direct or indirect, to cause the direction or management of such entity, whether by contract or otherwise, or (ii) ownership of fifty percent (50%) or more of the outstanding shares, or (iii) beneficial ownership of such entity.

"You" (or "Your") shall mean an individual or Legal Entity exercising permissions granted by this License.

"Source" form shall mean the preferred form for making modifications, including but not limited to software source code, documentation source, and configuration files.

"Object" form shall mean any form resulting from mechanical transformation or translation of a Source form, including but not limited to compiled object code, generated documentation, and conversions to other media types.

"Work" shall mean the work of authorship, whether in Source or Object form, made available under the License, as indicated by a copyright notice that is included in or attached to the work (an example is provided in the Appendix below).

"Derivative Works" shall mean any work, whether in Source or Object form, that is based on (or derived from) the Work and for which the editorial revisions, annotations, elaborations, or other modifications represent, as a whole, an original work of authorship. For the purposes of this License, Derivative Works shall not include works that remain separable from, or merely link (or bind by name) to the interfaces of, the Work and Derivative Works thereof.

"Contribution" shall mean any work of authorship, including the original version of the Work and any modifications or additions to that Work or Derivative Works thereof, that is intentionally submitted to Licensor for inclusion in the Work by the copyright owner or by an individual or Legal Entity authorized to submit on behalf of the copyright owner. For the purposes of this definition, "submitted" means any form of electronic, verbal, or written communication sent to the Licensor or its representatives, including but not limited to communication on electronic mailing lists, source code control systems, and issue tracking systems that are managed by, or on behalf of, the Licensor for the purpose of discussing and improving the Work, but excluding communication that is conspicuously marked or otherwise designated in writing by the copyright owner as "Not a Contribution."

"Contributor" shall mean Licensor and any individual or Legal Entity on behalf of whom a Contribution has been received by Licensor and subsequently incorporated within the Work.

2. Grant of Copyright License. Subject to the terms and conditions of this License, each Contributor hereby grants to You a perpetual, worldwide, non-exclusive, no-charge, royalty-free, irrevocable copyright license to reproduce, prepare Derivative Works of, publicly display, publicly perform, sublicense, and distribute the Work and such Derivative Works in Source or Object form.
3. Grant of Patent License. Subject to the terms and conditions of this License, each Contributor hereby grants to You a perpetual, worldwide, non-exclusive, no-charge, royalty-free, irrevocable (except as stated in this section) patent license to make, have made, use, offer to sell, sell, import, and otherwise transfer the Work, where such license applies only to those patent claims licensable by

such Contributor that are necessarily infringed by their Contribution(s) alone or by combination of their Contribution(s) with the Work to which such Contribution(s) was submitted. If You institute patent litigation against any entity (including a cross-claim or counterclaim in a lawsuit) alleging that the Work or a Contribution incorporated within the Work constitutes direct or contributory patent infringement, then any patent licenses granted to You under this License for that Work shall terminate as of the date such litigation is filed.

4. Redistribution. You may reproduce and distribute copies of the Work or Derivative Works thereof in any medium, with or without modifications, and in Source or Object form, provided that You meet the following conditions:
  1. You must give any other recipients of the Work or Derivative Works a copy of this License; and
  2. You must cause any modified files to carry prominent notices stating that You changed the files; and
  3. You must retain, in the Source form of any Derivative Works that You distribute, all copyright, patent, trademark, and attribution notices from the Source form of the Work, excluding those notices that do not pertain to any part of the Derivative Works; and
  4. If the Work includes a "NOTICE" text file as part of its distribution, then any Derivative Works that You distribute must include a readable copy of the attribution notices contained within such NOTICE file, excluding those notices that do not pertain to any part of the Derivative Works, in at least one of the following places: within a NOTICE text file distributed as part of the Derivative Works; within the Source form or documentation, if provided along with the Derivative Works; or, within a display generated by the Derivative Works, if and wherever such third-party notices normally appear. The contents of the NOTICE file are for informational purposes only and do not modify the License. You may add Your own attribution notices within Derivative Works that You distribute, alongside or as an addendum to the NOTICE text from the Work, provided that such additional attribution notices cannot be construed as modifying the License.

You may add Your own copyright statement to Your modifications and may provide additional or different license terms and conditions for use, reproduction, or distribution of Your modifications, or for any such Derivative Works as a whole, provided Your use, reproduction, and distribution of the Work otherwise complies with the conditions stated in this License.

5. Submission of Contributions. Unless You explicitly state otherwise, any Contribution intentionally submitted for inclusion in the Work by You to the Licensor shall be under the terms and conditions of this License, without any additional terms or conditions. Notwithstanding the above, nothing herein shall supersede or modify the terms of any separate license agreement you may have executed with Licensor regarding such Contributions.
6. Trademarks. This License does not grant permission to use the trade names, trademarks, service marks, or product names of the Licensor, except as required for reasonable and customary use in describing the origin of the Work and reproducing the content of the NOTICE file.
7. Disclaimer of Warranty. Unless required by applicable law or agreed to in writing, Licensor provides the Work (and each Contributor provides its Contributions) on an "AS IS" BASIS, WITHOUT WARRANTIES OR CONDITIONS OF ANY KIND, either express or implied, including, without limitation, any warranties or conditions of TITLE, NON-INFRINGEMENT, MERCHANTABILITY, or FITNESS FOR A PARTICULAR PURPOSE. You are solely responsible for determining the appropriateness of using or redistributing the Work and assume any risks associated with Your exercise of permissions under this License.
8. Limitation of Liability. In no event and under no legal theory, whether in tort (including negligence), contract, or otherwise, unless required by applicable law (such as deliberate and grossly negligent

acts) or agreed to in writing, shall any Contributor be liable to You for damages, including any direct, indirect, special, incidental, or consequential damages of any character arising as a result of this License or out of the use or inability to use the Work (including but not limited to damages for loss of goodwill, work stoppage, computer failure or malfunction, or any and all other commercial damages or losses), even if such Contributor has been advised of the possibility of such damages.

9. Accepting Warranty or Additional Liability. While redistributing the Work or Derivative Works thereof, You may choose to offer, and charge a fee for, acceptance of support, warranty, indemnity, or other liability obligations and/or rights consistent with this License. However, in accepting such obligations, You may act only on Your own behalf and on Your sole responsibility, not on behalf of any other Contributor, and only if You agree to indemnify, defend, and hold each Contributor harmless for any liability incurred by, or claims asserted against, such Contributor by reason of your accepting any such warranty or additional liability.

END OF TERMS AND CONDITIONS

---- Part 1: CMU/UCD copyright notice: (BSD like) ----

Copyright 1989, 1991, 1992 by Carnegie Mellon University

Derivative Work - 1996, 1998-2000

Copyright 1996, 1998-2000 The Regents of the University of California

All Rights Reserved

Permission to use, copy, modify and distribute this software and its documentation for any purpose and without fee is hereby granted, provided that the above copyright notice appears in all copies and that both that copyright notice and this permission notice appear in supporting documentation, and that the name of CMU and The Regents of the University of California not be used in advertising or publicity pertaining to distribution of the software without specific written permission.

CMU AND THE REGENTS OF THE UNIVERSITY OF CALIFORNIA DISCLAIM ALL WARRANTIES WITH REGARD TO THIS SOFTWARE, INCLUDING ALL IMPLIED WARRANTIES OF MERCHANTABILITY AND FITNESS. IN NO EVENT SHALL CMU OR THE REGENTS OF THE UNIVERSITY OF CALIFORNIA BE LIABLE FOR ANY SPECIAL, INDIRECT OR CONSEQUENTIAL DAMAGES OR ANY DAMAGES WHATSOEVER RESULTING FROM THE LOSS OF USE, DATA OR PROFITS, WHETHER IN AN ACTION OF CONTRACT, NEGLIGENCE OR OTHER TORTIOUS ACTION, ARISING OUT OF OR IN CONNECTION WITH THE USE OR PERFORMANCE OF THIS SOFTWARE.

---- Part 2: Networks Associates Technology, Inc copyright notice (BSD) ----

Copyright (c) 2001-2003, Networks Associates Technology, Inc

All rights reserved.

Redistribution and use in source and binary forms, with or without modification, are permitted provided that the following conditions are met:

- \* Redistributions of source code must retain the above copyright notice, this list of conditions and the following disclaimer.
- \* Redistributions in binary form must reproduce the above copyright notice, this list of conditions and the following disclaimer in the documentation and/or other materials provided with the distribution.
- \* Neither the name of the Networks Associates Technology, Inc nor the names of its contributors may be used to endorse or promote products derived from this software without specific prior written permission.



THIS SOFTWARE IS PROVIDED BY THE COPYRIGHT HOLDERS AND CONTRIBUTORS ``AS IS" AND ANY EXPRESS OR IMPLIED WARRANTIES, INCLUDING, BUT NOT LIMITED TO, THE IMPLIED WARRANTIES OF MERCHANTABILITY AND FITNESS FOR A PARTICULAR PURPOSE ARE DISCLAIMED. IN NO EVENT SHALL THE COPYRIGHT HOLDERS OR CONTRIBUTORS BE LIABLE FOR ANY DIRECT, INDIRECT, INCIDENTAL, SPECIAL, EXEMPLARY, OR CONSEQUENTIAL DAMAGES (INCLUDING, BUT NOT LIMITED TO, PROCUREMENT OF SUBSTITUTE GOODS OR SERVICES; LOSS OF USE, DATA, OR PROFITS; OR BUSINESS INTERRUPTION) HOWEVER CAUSED AND ON ANY THEORY OF LIABILITY, WHETHER IN CONTRACT, STRICT LIABILITY, OR TORT (INCLUDING NEGLIGENCE OR OTHERWISE) ARISING IN ANY WAY OUT OF THE USE OF THIS SOFTWARE, EVEN IF ADVISED OF THE POSSIBILITY OF SUCH DAMAGE.

---- Part 3: Cambridge Broadband Ltd. copyright notice (BSD) ----

Portions of this code are copyright (c) 2001-2003, Cambridge Broadband Ltd.

All rights reserved.

Redistribution and use in source and binary forms, with or without modification, are permitted provided that the following conditions are met:

- \* Redistributions of source code must retain the above copyright notice, this list of conditions and the following disclaimer.
- \* Redistributions in binary form must reproduce the above copyright notice, this list of conditions and the following disclaimer in the documentation and/or other materials provided with the distribution.
- \* The name of Cambridge Broadband Ltd. may not be used to endorse or promote products derived from this software without specific prior written permission.

THIS SOFTWARE IS PROVIDED BY THE COPYRIGHT HOLDER ``AS IS" AND ANY EXPRESS OR IMPLIED WARRANTIES, INCLUDING, BUT NOT LIMITED TO, THE IMPLIED WARRANTIES OF MERCHANTABILITY AND FITNESS FOR A PARTICULAR PURPOSE ARE DISCLAIMED. IN NO EVENT SHALL THE COPYRIGHT HOLDER BE LIABLE FOR ANY DIRECT, INDIRECT, INCIDENTAL, SPECIAL, EXEMPLARY, OR CONSEQUENTIAL DAMAGES (INCLUDING, BUT NOT LIMITED TO, PROCUREMENT OF SUBSTITUTE GOODS OR SERVICES; LOSS OF USE, DATA, OR PROFITS; OR BUSINESS INTERRUPTION) HOWEVER CAUSED AND ON ANY THEORY OF LIABILITY, WHETHER IN CONTRACT, STRICT LIABILITY, OR TORT (INCLUDING NEGLIGENCE OR OTHERWISE) ARISING IN ANY WAY OUT OF THE USE OF THIS SOFTWARE, EVEN IF ADVISED OF THE POSSIBILITY OF SUCH DAMAGE.

---- Part 4: Sun Microsystems, Inc. copyright notice (BSD) ----

Copyright c 2003 Sun Microsystems, Inc., 4150 Network Circle, Santa Clara, California 95054, U.S.A. All rights reserved.

Use is subject to license terms below.

This distribution may include materials developed by third parties.

Sun, Sun Microsystems, the Sun logo and Solaris are trademarks or registered trademarks of Sun Microsystems, Inc. in the U.S. and other countries.

Redistribution and use in source and binary forms, with or without modification, are permitted provided that the following conditions are met:

\* Redistributions of source code must retain the above copyright notice, this list of conditions and the following disclaimer.

\* Redistributions in binary form must reproduce the above copyright notice, this list of conditions and the following disclaimer in the documentation and/or other materials provided with the distribution.

\* Neither the name of the Sun Microsystems, Inc. nor the names of its contributors may be used to endorse or promote products derived from this software without specific prior written permission.

THIS SOFTWARE IS PROVIDED BY THE COPYRIGHT HOLDERS AND CONTRIBUTORS ``AS IS'' AND ANY EXPRESS OR IMPLIED WARRANTIES, INCLUDING, BUT NOT LIMITED TO, THE IMPLIED WARRANTIES OF MERCHANTABILITY AND FITNESS FOR A PARTICULAR PURPOSE ARE DISCLAIMED. IN NO EVENT SHALL THE COPYRIGHT HOLDERS OR CONTRIBUTORS BE LIABLE FOR ANY DIRECT, INDIRECT, INCIDENTAL, SPECIAL, EXEMPLARY, OR CONSEQUENTIAL DAMAGES (INCLUDING, BUT NOT LIMITED TO, PROCUREMENT OF SUBSTITUTE GOODS OR SERVICES; LOSS OF USE, DATA, OR PROFITS; OR BUSINESS INTERRUPTION) HOWEVER CAUSED AND ON ANY THEORY OF LIABILITY, WHETHER IN CONTRACT, STRICT LIABILITY, OR TORT (INCLUDING NEGLIGENCE OR OTHERWISE) ARISING IN ANY WAY OUT OF THE USE OF THIS SOFTWARE, EVEN IF ADVISED OF THE POSSIBILITY OF SUCH DAMAGE.

---- Part 5: Sparta, Inc copyright notice (BSD) ----

Copyright (c) 2003-2012, Sparta, Inc

All rights reserved.

Redistribution and use in source and binary forms, with or without modification, are permitted provided that the following conditions are met:

\* Redistributions of source code must retain the above copyright notice, this list of conditions and the following disclaimer.

\* Redistributions in binary form must reproduce the above copyright notice, this list of conditions and the following disclaimer in the documentation and/or other materials provided with the distribution.

\* Neither the name of Sparta, Inc nor the names of its contributors may be used to endorse or promote products derived from this software without specific prior written permission.

THIS SOFTWARE IS PROVIDED BY THE COPYRIGHT HOLDERS AND CONTRIBUTORS ``AS IS'' AND ANY EXPRESS OR IMPLIED WARRANTIES, INCLUDING, BUT NOT LIMITED TO, THE IMPLIED WARRANTIES OF MERCHANTABILITY AND FITNESS FOR A PARTICULAR PURPOSE ARE DISCLAIMED. IN NO EVENT SHALL THE COPYRIGHT HOLDERS OR CONTRIBUTORS BE LIABLE FOR ANY DIRECT, INDIRECT, INCIDENTAL, SPECIAL, EXEMPLARY, OR CONSEQUENTIAL DAMAGES (INCLUDING, BUT NOT LIMITED TO, PROCUREMENT OF SUBSTITUTE GOODS OR SERVICES; LOSS OF USE, DATA, OR PROFITS; OR BUSINESS INTERRUPTION) HOWEVER CAUSED AND ON ANY THEORY OF LIABILITY, WHETHER IN CONTRACT, STRICT LIABILITY, OR TORT (INCLUDING NEGLIGENCE OR OTHERWISE) ARISING IN ANY WAY OUT OF THE USE OF THIS SOFTWARE, EVEN IF ADVISED OF THE POSSIBILITY OF SUCH DAMAGE.

---- Part 6: Cisco/BUPTNIC copyright notice (BSD) ----

Copyright (c) 2004, Cisco, Inc and Information Network Center of Beijing University of Posts and Telecommunications.

All rights reserved.

Redistribution and use in source and binary forms, with or without modification, are permitted provided that the following conditions are met:

- \* Redistributions of source code must retain the above copyright notice, this list of conditions and the following disclaimer.
- \* Redistributions in binary form must reproduce the above copyright notice, this list of conditions and the following disclaimer in the documentation and/or other materials provided with the distribution.
- \* Neither the name of Cisco, Inc, Beijing University of Posts and Telecommunications, nor the names of their contributors may be used to endorse or promote products derived from this software without specific prior written permission.

THIS SOFTWARE IS PROVIDED BY THE COPYRIGHT HOLDERS AND CONTRIBUTORS "AS IS" AND ANY EXPRESS OR IMPLIED WARRANTIES, INCLUDING, BUT NOT LIMITED TO, THE IMPLIED WARRANTIES OF MERCHANTABILITY AND FITNESS FOR A PARTICULAR PURPOSE ARE DISCLAIMED. IN NO EVENT SHALL THE COPYRIGHT HOLDERS OR CONTRIBUTORS BE LIABLE FOR ANY DIRECT, INDIRECT, INCIDENTAL, SPECIAL, EXEMPLARY, OR CONSEQUENTIAL DAMAGES (INCLUDING, BUT NOT LIMITED TO, PROCUREMENT OF SUBSTITUTE GOODS OR SERVICES; LOSS OF USE, DATA, OR PROFITS; OR BUSINESS INTERRUPTION) HOWEVER CAUSED AND ON ANY THEORY OF LIABILITY, WHETHER IN CONTRACT, STRICT LIABILITY, OR TORT (INCLUDING NEGLIGENCE OR OTHERWISE) ARISING IN ANY WAY OUT OF THE USE OF THIS SOFTWARE, EVEN IF ADVISED OF THE POSSIBILITY OF SUCH DAMAGE.

---- Part 7: Fabasoft R&D Software GmbH & Co KG copyright notice (BSD) ----

Copyright (c) Fabasoft R&D Software GmbH & Co KG, 2003 oss@fabasoft.com

Author: Bernhard Penz <bernhard.penz@fabasoft.com>

Redistribution and use in source and binary forms, with or without modification, are permitted provided that the following conditions are met:

- \* Redistributions of source code must retain the above copyright notice, this list of conditions and the following disclaimer.
- \* Redistributions in binary form must reproduce the above copyright notice, this list of conditions and the following disclaimer in the documentation and/or other materials provided with the distribution.
- \* The name of Fabasoft R&D Software GmbH & Co KG or any of its subsidiaries, brand or product names may not be used to endorse or promote products derived from this software without specific prior written permission.

THIS SOFTWARE IS PROVIDED BY THE COPYRIGHT HOLDER "AS IS" AND ANY EXPRESS OR IMPLIED WARRANTIES, INCLUDING, BUT NOT LIMITED TO, THE IMPLIED WARRANTIES OF MERCHANTABILITY AND FITNESS FOR A PARTICULAR PURPOSE ARE DISCLAIMED. IN NO EVENT SHALL THE COPYRIGHT HOLDER BE LIABLE FOR ANY DIRECT, INDIRECT, INCIDENTAL, SPECIAL, EXEMPLARY, OR CONSEQUENTIAL DAMAGES (INCLUDING, BUT NOT LIMITED TO, PROCUREMENT OF SUBSTITUTE GOODS OR SERVICES; LOSS OF USE, DATA, OR PROFITS; OR BUSINESS INTERRUPTION) HOWEVER CAUSED AND ON ANY THEORY OF LIABILITY, WHETHER IN CONTRACT, STRICT LIABILITY, OR TORT (INCLUDING NEGLIGENCE OR OTHERWISE) ARISING IN ANY WAY OUT OF THE USE OF THIS SOFTWARE, EVEN IF ADVISED OF THE POSSIBILITY OF SUCH DAMAGE.

---- Part 8: Apple Inc. copyright notice (BSD) ----

Copyright (c) 2007 Apple Inc. All rights reserved.

Redistribution and use in source and binary forms, with or without modification, are permitted provided that the following conditions are met:

1. Redistributions of source code must retain the above copyright notice, this list of conditions and the following disclaimer.
2. Redistributions in binary form must reproduce the above copyright notice, this list of conditions and the following disclaimer in the documentation and/or other materials provided with the distribution.
3. Neither the name of Apple Inc. ("Apple") nor the names of its contributors may be used to endorse or promote products derived from this software without specific prior written permission.

THIS SOFTWARE IS PROVIDED BY APPLE AND ITS CONTRIBUTORS "AS IS" AND ANY EXPRESS OR IMPLIED WARRANTIES, INCLUDING, BUT NOT LIMITED TO, THE IMPLIED WARRANTIES OF MERCHANTABILITY AND FITNESS FOR A PARTICULAR PURPOSE ARE DISCLAIMED. IN NO EVENT SHALL APPLE OR ITS CONTRIBUTORS BE LIABLE FOR ANY DIRECT, INDIRECT, INCIDENTAL, SPECIAL, EXEMPLARY, OR CONSEQUENTIAL DAMAGES (INCLUDING, BUT NOT LIMITED TO, PROCUREMENT OF SUBSTITUTE GOODS OR SERVICES; LOSS OF USE, DATA, OR PROFITS; OR BUSINESS INTERRUPTION) HOWEVER CAUSED AND ON ANY THEORY OF LIABILITY, WHETHER IN CONTRACT, STRICT LIABILITY, OR TORT (INCLUDING NEGLIGENCE OR OTHERWISE) ARISING IN ANY WAY OUT OF THE USE OF THIS SOFTWARE, EVEN IF ADVISED OF THE POSSIBILITY OF SUCH DAMAGE.

---- Part 9: ScienceLogic, LLC copyright notice (BSD) ----

Copyright (c) 2009, ScienceLogic, LLC

All rights reserved.

Redistribution and use in source and binary forms, with or without modification, are permitted provided that the following conditions are met:

- \* Redistributions of source code must retain the above copyright notice, this list of conditions and the following disclaimer.
- \* Redistributions in binary form must reproduce the above copyright notice, this list of conditions and the following disclaimer in the documentation and/or other materials provided with the distribution.
- \* Neither the name of ScienceLogic, LLC nor the names of its contributors may be used to endorse or promote products derived from this software without specific prior written permission.

THIS SOFTWARE IS PROVIDED BY THE COPYRIGHT HOLDERS AND CONTRIBUTORS "AS IS" AND ANY EXPRESS OR IMPLIED WARRANTIES, INCLUDING, BUT NOT LIMITED TO, THE IMPLIED WARRANTIES OF MERCHANTABILITY AND FITNESS FOR A PARTICULAR PURPOSE ARE DISCLAIMED. IN NO EVENT SHALL THE COPYRIGHT HOLDERS OR CONTRIBUTORS BE LIABLE FOR ANY DIRECT, INDIRECT, INCIDENTAL, SPECIAL, EXEMPLARY, OR CONSEQUENTIAL DAMAGES (INCLUDING, BUT NOT LIMITED TO, PROCUREMENT OF SUBSTITUTE GOODS OR SERVICES; LOSS OF USE, DATA, OR PROFITS; OR BUSINESS INTERRUPTION) HOWEVER CAUSED AND ON ANY THEORY OF LIABILITY, WHETHER IN CONTRACT, STRICT LIABILITY, OR TORT (INCLUDING NEGLIGENCE OR OTHERWISE) ARISING IN ANY WAY OUT OF THE USE OF THIS SOFTWARE, EVEN IF ADVISED OF THE POSSIBILITY OF SUCH DAMAGE.

LEADTOOLS

Copyright (C) 1991-2009 LEAD Technologies, Inc.

CMap Resources

---

Copyright 1990-2009 Adobe Systems Incorporated.  
All rights reserved.

Copyright 1990-2010 Adobe Systems Incorporated.  
All rights reserved.

Redistribution and use in source and binary forms, with or without modification, are permitted provided that the following conditions are met:

Redistributions of source code must retain the above copyright notice, this list of conditions and the following disclaimer.

Redistributions in binary form must reproduce the above copyright notice, this list of conditions and the following disclaimer in the documentation and/or other materials provided with the distribution.

Neither the name of Adobe Systems Incorporated nor the names of its contributors may be used to endorse or promote products derived from this software without specific prior written permission.

THIS SOFTWARE IS PROVIDED BY THE COPYRIGHT HOLDERS AND CONTRIBUTORS "AS IS" AND ANY EXPRESS OR IMPLIED WARRANTIES, INCLUDING, BUT NOT LIMITED TO, THE IMPLIED WARRANTIES OF MERCHANTABILITY AND FITNESS FOR A PARTICULAR PURPOSE ARE DISCLAIMED. IN NO EVENT SHALL THE COPYRIGHT HOLDER OR CONTRIBUTORS BE LIABLE FOR ANY DIRECT, INDIRECT, INCIDENTAL, SPECIAL, EXEMPLARY, OR CONSEQUENTIAL DAMAGES (INCLUDING, BUT NOT LIMITED TO, PROCUREMENT OF SUBSTITUTE GOODS OR SERVICES; LOSS OF USE, DATA, OR PROFITS; OR BUSINESS INTERRUPTION) HOWEVER CAUSED AND ON ANY THEORY OF LIABILITY, WHETHER IN CONTRACT, STRICT LIABILITY, OR TORT (INCLUDING NEGLIGENCE OR OTHERWISE) ARISING IN ANY WAY OUT OF THE USE OF THIS SOFTWARE, EVEN IF ADVISED OF THE POSSIBILITY OF SUCH DAMAGE.

---

MIT License

Copyright (c) 1998, 1999, 2000 Thai Open Source Software Center Ltd

Permission is hereby granted, free of charge, to any person obtaining a copy of this software and associated documentation files (the "Software"), to deal in the Software without restriction, including without limitation the rights to use, copy, modify, merge, publish, distribute, sublicense, and/or sell copies of the Software, and to permit persons to whom the Software is furnished to do so, subject to the following conditions:

The above copyright notice and this permission notice shall be included in all copies or substantial portions of the Software.

THE SOFTWARE IS PROVIDED "AS IS", WITHOUT WARRANTY OF ANY KIND, EXPRESS OR IMPLIED, INCLUDING BUT NOT LIMITED TO THE WARRANTIES OF MERCHANTABILITY, FITNESS FOR A PARTICULAR PURPOSE AND NONINFRINGEMENT. IN NO EVENT SHALL THE AUTHORS OR COPYRIGHT HOLDERS BE LIABLE FOR ANY CLAIM, DAMAGES OR OTHER LIABILITY, WHETHER IN AN ACTION OF CONTRACT, TORT OR OTHERWISE, ARISING FROM, OUT OF OR IN CONNECTION WITH THE SOFTWARE OR THE USE OR OTHER DEALINGS IN THE SOFTWARE.

Written by Joel Sherrill <joel@OARcorp.com>.

COPYRIGHT (c) 1989-2000.

On-Line Applications Research Corporation (OAR).

Permission to use, copy, modify, and distribute this software for any purpose without fee is hereby granted, provided that this entire notice is included in all copies of any software which is or includes a copy or modification of this software.

THIS SOFTWARE IS BEING PROVIDED "AS IS", WITHOUT ANY EXPRESS OR IMPLIED WARRANTY. IN PARTICULAR, THE AUTHOR MAKES NO REPRESENTATION OR WARRANTY OF ANY KIND CONCERNING THE MERCHANTABILITY OF THIS SOFTWARE OR ITS FITNESS FOR ANY PARTICULAR PURPOSE.

(1) Red Hat Incorporated

Copyright (c) 1994-2009 Red Hat, Inc. All rights reserved.

This copyrighted material is made available to anyone wishing to use, modify, copy, or redistribute it subject to the terms and conditions of the BSD License. This program is distributed in the hope that it will be useful, but WITHOUT ANY WARRANTY expressed or implied, including the implied warranties of MERCHANTABILITY or FITNESS FOR A PARTICULAR PURPOSE. A copy of this license is available at <http://www.opensource.org/licenses>. Any Red Hat trademarks that are incorporated in the source code or documentation are not subject to the BSD License and may only be used or replicated with the express permission of Red Hat, Inc.

(2) University of California, Berkeley

Copyright (c) 1981-2000 The Regents of the University of California.

All rights reserved.

Redistribution and use in source and binary forms, with or without modification, are permitted provided that the following conditions are met:

- \* Redistributions of source code must retain the above copyright notice, this list of conditions and the following disclaimer.
- \* Redistributions in binary form must reproduce the above copyright notice, this list of conditions and the following disclaimer in the documentation and/or other materials provided with the distribution.
- \* Neither the name of the University nor the names of its contributors may be used to endorse or promote products derived from this software without specific prior written permission.

THIS SOFTWARE IS PROVIDED BY THE COPYRIGHT HOLDERS AND CONTRIBUTORS "AS IS" AND ANY EXPRESS OR IMPLIED WARRANTIES, INCLUDING, BUT NOT LIMITED TO, THE IMPLIED WARRANTIES OF MERCHANTABILITY AND FITNESS FOR A PARTICULAR PURPOSE ARE

DISCLAIMED. IN NO EVENT SHALL THE COPYRIGHT OWNER OR CONTRIBUTORS BE LIABLE FOR ANY DIRECT, INDIRECT, INCIDENTAL, SPECIAL, EXEMPLARY, OR CONSEQUENTIAL DAMAGES (INCLUDING, BUT NOT LIMITED TO, PROCUREMENT OF SUBSTITUTE GOODS OR SERVICES; LOSS OF USE, DATA, OR PROFITS; OR BUSINESS INTERRUPTION) HOWEVER CAUSED AND ON ANY THEORY OF LIABILITY, WHETHER IN CONTRACT, STRICT LIABILITY, OR TORT (INCLUDING NEGLIGENCE OR OTHERWISE) ARISING IN ANY WAY OUT OF THE USE OF THIS SOFTWARE, EVEN IF ADVISED OF THE POSSIBILITY OF SUCH DAMAGE.

以下仅适用于支持 Wi-Fi 的产品。

(c) 2009-2013 by Jeff Mott. All rights reserved.

Redistribution and use in source and binary forms, with or without modification, are permitted provided that the following conditions are met:

- \* Redistributions of source code must retain the above copyright notice, this list of conditions, and the following disclaimer.
- \* Redistributions in binary form must reproduce the above copyright notice, this list of conditions, and the following disclaimer in the documentation or other materials provided with the distribution.
- \* Neither the name CryptoJS nor the names of its contributors may be used to endorse or promote products derived from this software without specific prior written permission.

THIS SOFTWARE IS PROVIDED BY THE COPYRIGHT HOLDERS AND CONTRIBUTORS "AS IS," AND ANY EXPRESS OR IMPLIED WARRANTIES, INCLUDING, BUT NOT LIMITED TO, THE IMPLIED WARRANTIES OF MERCHANTABILITY AND FITNESS FOR A PARTICULAR PURPOSE, ARE DISCLAIMED. IN NO EVENT SHALL THE COPYRIGHT HOLDER OR CONTRIBUTORS BE LIABLE FOR ANY DIRECT, INDIRECT, INCIDENTAL, SPECIAL, EXEMPLARY, OR CONSEQUENTIAL DAMAGES (INCLUDING, BUT NOT LIMITED TO, PROCUREMENT OF SUBSTITUTE GOODS OR SERVICES; LOSS OF USE, DATA, OR PROFITS; OR BUSINESS INTERRUPTION) HOWEVER CAUSED AND ON ANY THEORY OF LIABILITY, WHETHER IN CONTRACT, STRICT LIABILITY, OR TORT (INCLUDING NEGLIGENCE OR OTHERWISE) ARISING IN ANY WAY OUT OF THE USE OF THIS SOFTWARE, EVEN IF ADVISED OF THE POSSIBILITY OF SUCH DAMAGE.

## My Image Garden 指南



## 什么是 My Image Garden?

- ▶ **My Image Garden 功能**
  - 选择图像、PDF 文件和视频
- ▶ **启动 My Image Garden**

# My Image Garden 功能

My Image Garden 是可以使用数码相机拍摄的照片和保存在计算机上的其他图像的应用程序。

## 功能一览

- [从 My Image Garden 获取布局建议](#)
- [自动组织照片](#)
- [打印照片和文档](#)
- [打印个性化项目](#)
- [打印光盘标签\(CD/DVD/BD\)](#)
- [从视频捕捉和打印静态图像](#)
- [扫描照片和文档](#)
- [修正/增强照片](#)

## ►► 注释

- My Image Garden 中可用的文件格式根据功能不同而有所不同。有关详细资料，请参见文件格式。

## 从 My Image Garden 获取布局建议

My Image Garden 采用的“Image Assorting Technology”技术提供以下功能。

- 图像分析功能通过检测照片中的面部按人物对图像进行分组，并根据拍摄日期和时间自动将图像和视频注册至日历。
- 项目推荐功能自动为已分析图像推荐布局。

通过此技术可以轻松创建并打印多种项目，如拼贴画和卡片。

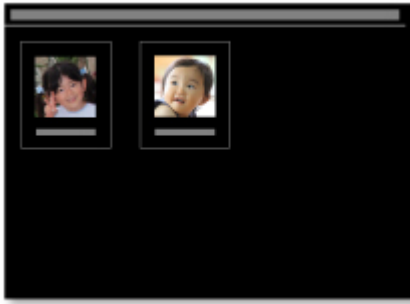
- 使用项目推荐功能



## 自动组织照片

My Image Garden 中分析的图像会出现在**未注册人物**视图或在**人物**视图中按人物分组出现。也会根据拍摄日期和时间出现在**日历**视图中。注册人物的配置文件或事件信息可组织大量图像或快速搜索所需图像。

- 注册人物
- 注册事件



## 打印照片和文档

在打印前轻松预览喜爱的照片。也可以打印保存为 PDF 文件的文档。

### ■ [打印照片和文档](#)



## 打印个性化项目

将喜爱的照片与预设模板进行组合，以创建和打印个性化项目，如拼贴画和卡片。

### ■ [创建和打印项目](#)



## 打印光盘标签(CD/DVD/BD)

使用喜爱的照片创建并打印个性化光盘标签(CD/DVD/BD)。

### ■ [打印光盘标签\(CD/DVD/BD\)](#)



## 从视频捕捉和打印静态图像

从视频中选择喜爱的场景并将其作为静态图像打印。

### ■ [从视频捕捉和打印静态图像](#)



## 扫描照片和文档

通过自动检测项目类型轻松扫描照片和文档。

### ■ [使用自动扫描轻松扫描](#)



## 修正/增强照片

修正红眼或调整图像的亮度和对比度。

### ■ [修正/增强照片](#)



### ▶▶ 注释

- 在 My Image Garden 中，可以使用多种方法选择图像、PDF 文件和视频。有关详细资料，请参见[选择图像、PDF 文件和视频](#)。

## 选择图像、PDF 文件和视频

在 My Image Garden 中，可以从多个屏幕选择图像、PDF 文件和视频。可以通过单击屏幕中显示的缩略图来选择图像、PDF 文件或视频。所选文件周围出现白框。

- [按拍摄或创建日期搜索\(日历视图\)](#)
- [选择已注册事件的文件\(事件视图\)](#)
- [选择已注册人物的文件\(人物视图\)](#)
- [搜索包含人物的照片\(未注册人物视图\)](#)
- [选择保存在特定文件夹中的文件\(文件夹视图\)](#)

### 重要事项

- 对于 PDF 文件，仅支持使用 My Image Garden 或 IJ Scan Utility 创建的 PDF 文件。不支持在其他应用程序中创建或编辑的 PDF 文件。
- 无法同时打印图像和 PDF 文件。将图像和 PDF 文件分开打印。
- 要同时选择同一文件夹中的多个文件，按住 Ctrl 键或 Shift 键的同时单击图像、PDF 文件或视频的缩略图。无法同时选择不同文件夹或视图中的图像。

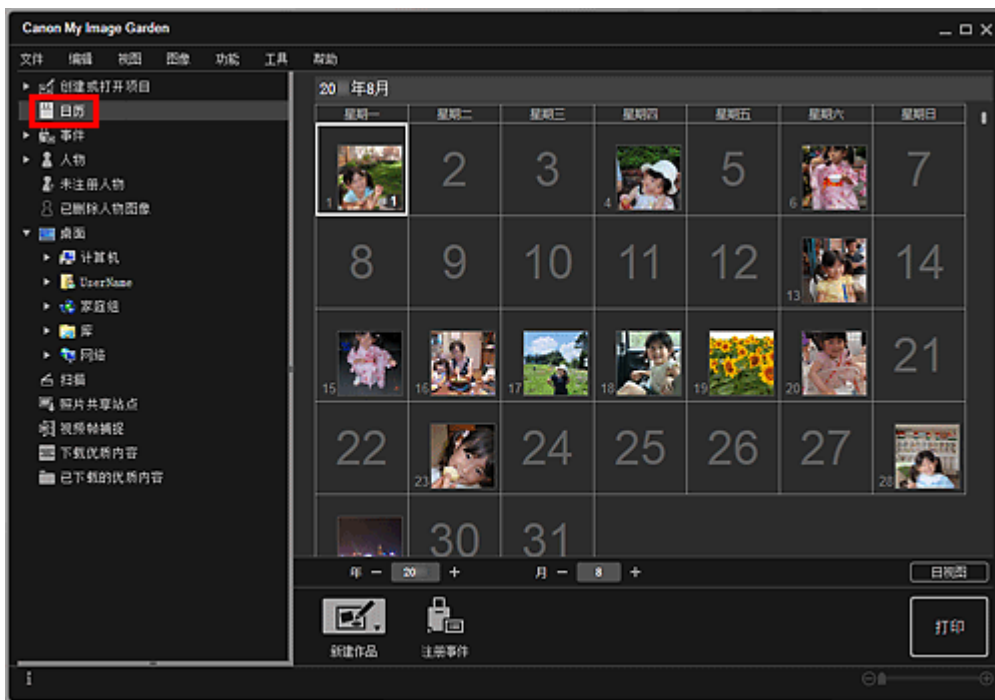
### 注释

- 也可以通过从视频捕捉来选择静态图像。
  - 从视频捕捉和打印静态图像
- 也可以选择从互联网上的照片共享站点下载的图像。
  - 从照片共享站点下载图像
- 对于视频，仅出现使用 Canon 数码相机或数码摄像机记录的 MOV 或 MP4 格式的视频。

## 日历视图(图像、PDF 文件和视频)

### 在月视图中：

单击**日历**时，视图切换至设置为月视图的**日历**，并且注册有图像或 PDF 文件的每个日期中会出现一个缩略图。单击缩略图时，将选择该日期中包含的所有图像、PDF 文件和视频。

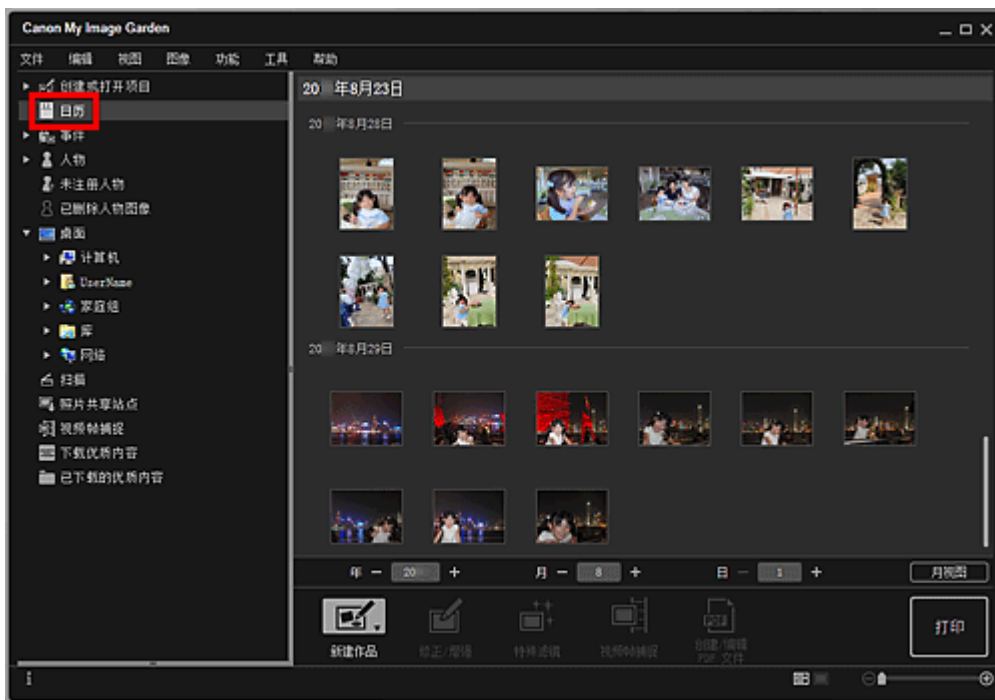


### »» 注释

- 单击某个日期并从**编辑**菜单中选择**选择全部**以选择该月份中的所有日期。

### 在日视图中：

在设置为月视图的**日历**视图中单击**日视图**时，视图切换至设置为日视图的**日历**，并且图像、PDF 文件和视频会按日期以缩略图的形式出现。



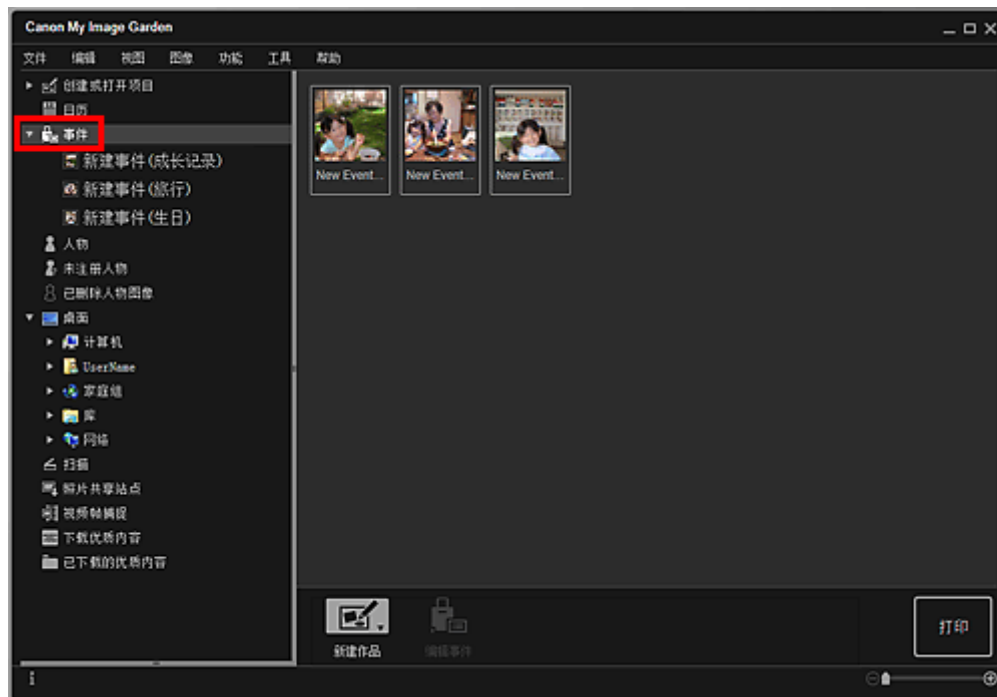
### »» 注释

- 单击图像或 PDF 文件的缩略图并从**编辑**菜单中选择**选择全部**以选择该日期的所有图像、PDF 文件和视频。



## 事件视图(图像、PDF 文件和视频)

单击**事件**时，视图切换至**事件**，并且已注册的事件及其代表图像会以缩略图的形式出现。单击缩略图时，将选择该事件中包含的所有图像。

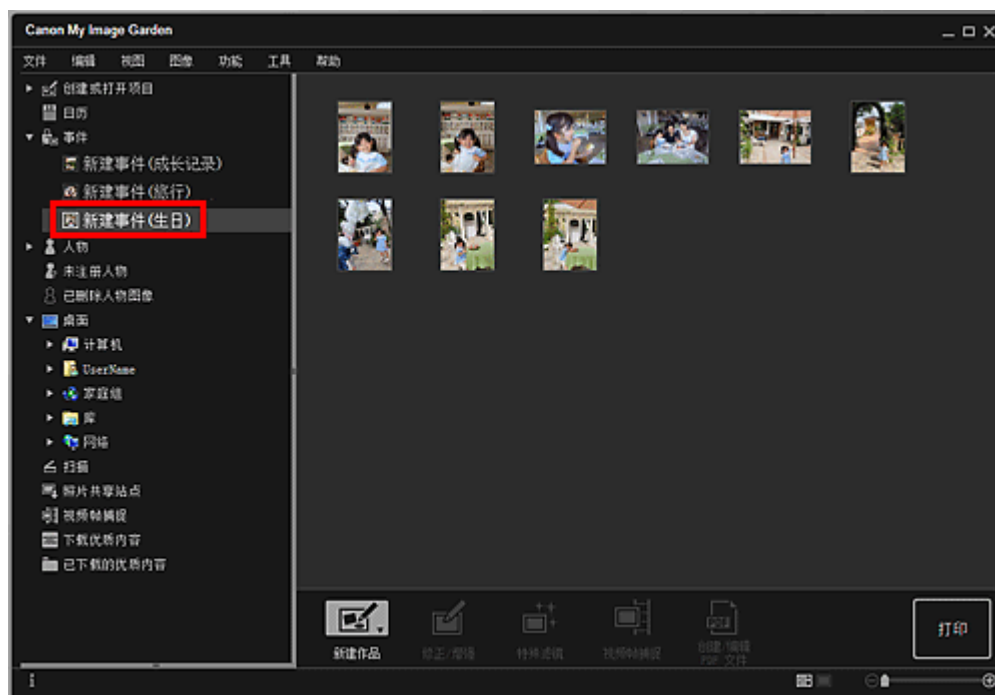


### 注 释

- 从**编辑**菜单中选择**选择全部**以选择所有事件。

### 在扩展显示中：

单击**事件**下显示的事件名称或双击**事件**视图中的事件时，该事件中包含的图像、PDF 文件和视频会以缩略图的形式出现。



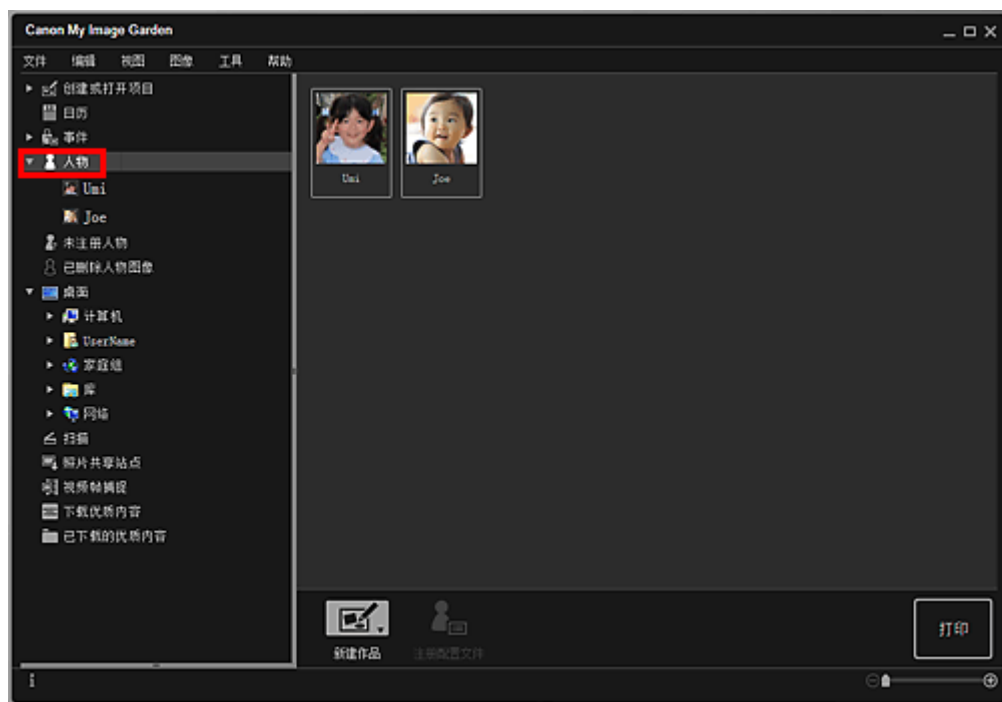


## 注 释

- 双击月视图日历中的事件标签时，该事件中包含的图像、PDF 文件和视频也会以缩略图的形式显示。
- 从编辑菜单中选择**选择全部**以选择所有图像、PDF 文件和视频。

## 人物视图(图像)

单击人物时，视图切换至人物，并且已注册的人物的图像会以缩略图的形式出现。单击缩略图时，将选择该人物中包含的所有图像。



## 注 释

- 从编辑菜单中选择**选择全部**以选择所有人物。

### 在扩展显示中：

单击人物下显示的名称或双击人物视图中的人物时，视图切换至人物的扩展显示，并且该人物中注册的图像会以缩略图的形式出现。



### 注 释

- 从编辑菜单中选择**选择全部**以选择所有图像。

## 未注册人物视图(图像)

单击未注册人物时，视图切换至未注册人物，并且通过图像分析检测到的图像会以缩略图的形式出现。



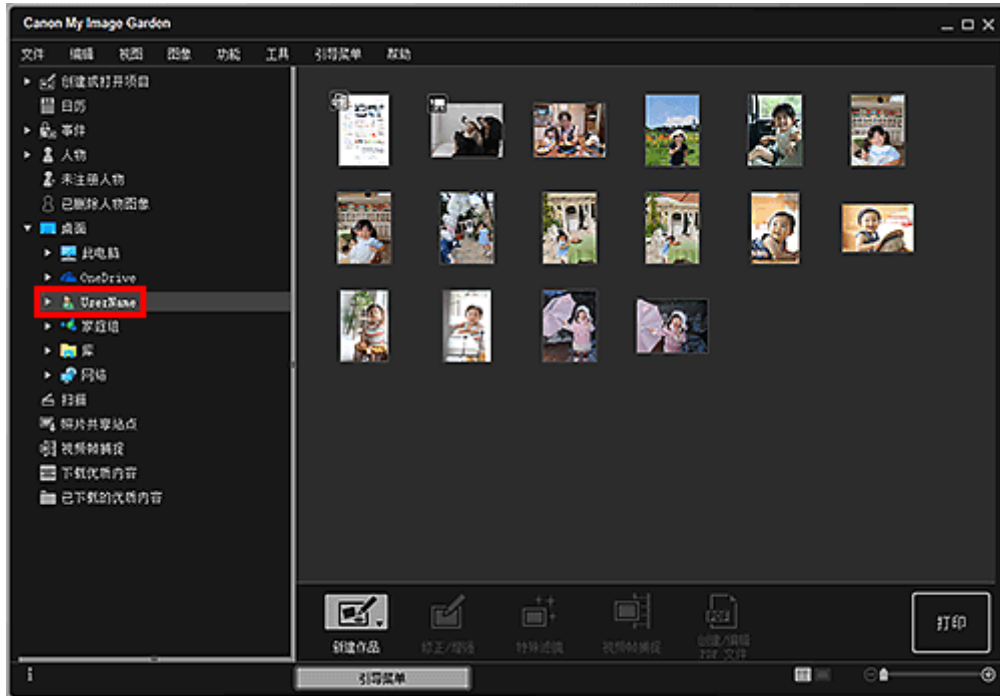
### 注 释

- 单击较小的缩略图以选择自动组织为同一人物的图像的所有图像。
- 单击图像的缩略图并从**编辑**菜单中选择**选择全部**以选择自动组织为同一人物的图像的所有图像。

- 分析图像时，屏幕左侧的全局菜单中的**未注册人物**中出现**识别人物**。

## 文件夹视图(图像、PDF 文件和视频)

在树形文件夹中选择文件夹时，该文件夹中的图像、PDF 文件和视频会以缩略图的形式出现。



## 启动 My Image Garden

可以用以下方法启动 My Image Garden。

- 单击 Quick Menu 中的  (启动 My Image Garden)
- 双击桌面上的  **Canon My Image Garden**
- 从程序文件夹启动

### Windows 10:

从**开始菜单**选择**所有应用** > Canon Utilities > My Image Garden。

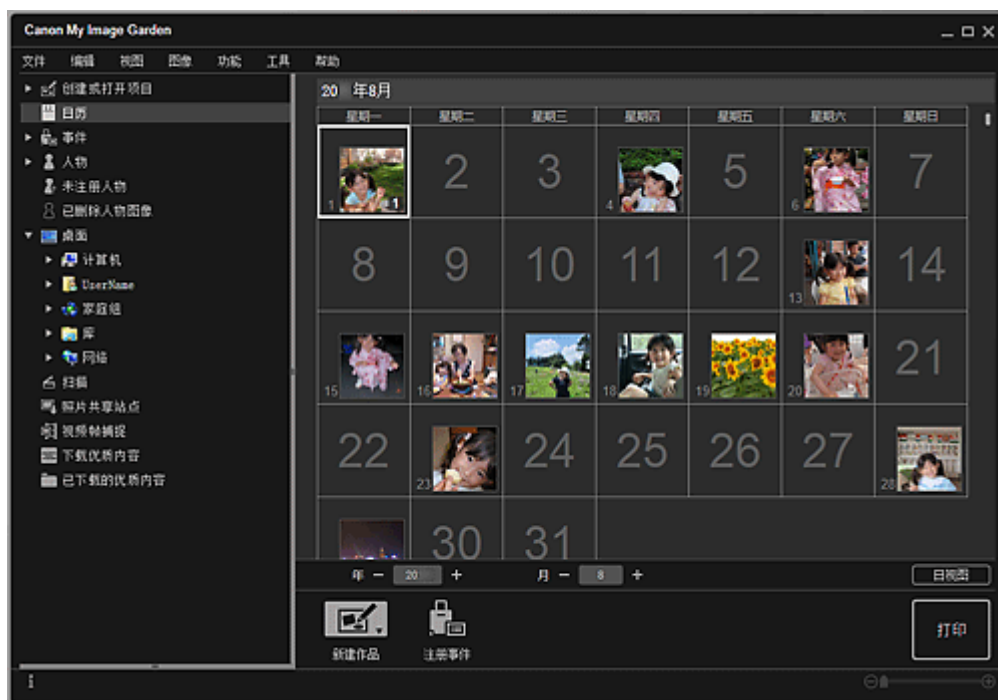
### Windows 8.1/Windows 8:

在开始屏幕上选择 **My Image Garden** 以启动 My Image Garden。

如果开始屏幕上未显示 **My Image Garden**，请选择**搜索**超级按钮，然后搜索“My Image Garden”。

### Windows 7/Windows Vista:

从**开始菜单**选择**所有程序** > Canon Utilities > My Image Garden > My Image Garden。



## 注释

- My Image Garden 分析已注册文件夹中的图像并以**日历视图**、**未注册人物视图**或**人物视图**显示，或将其用在 Image Display 显示的推荐布局中。

可以在第一次启动 My Image Garden 时出现的屏幕上或在**自定义格式**对话框中注册文件夹。默认状态下选择图片文件夹。

- 要更改执行图像分析的文件夹，请参见**图像分析设置**选项卡。
- 如果正在使用 ImageBrowser EX Ver.1.2.1 或更高版本，可以从 My Image Garden 启动 ImageBrowser EX。

## 打印

- ▶ 打印照片和文档
- ▶ 打印光盘标签(CD/DVD/BD)
- ▶ 创建和打印项目
  - 以多种布局打印照片

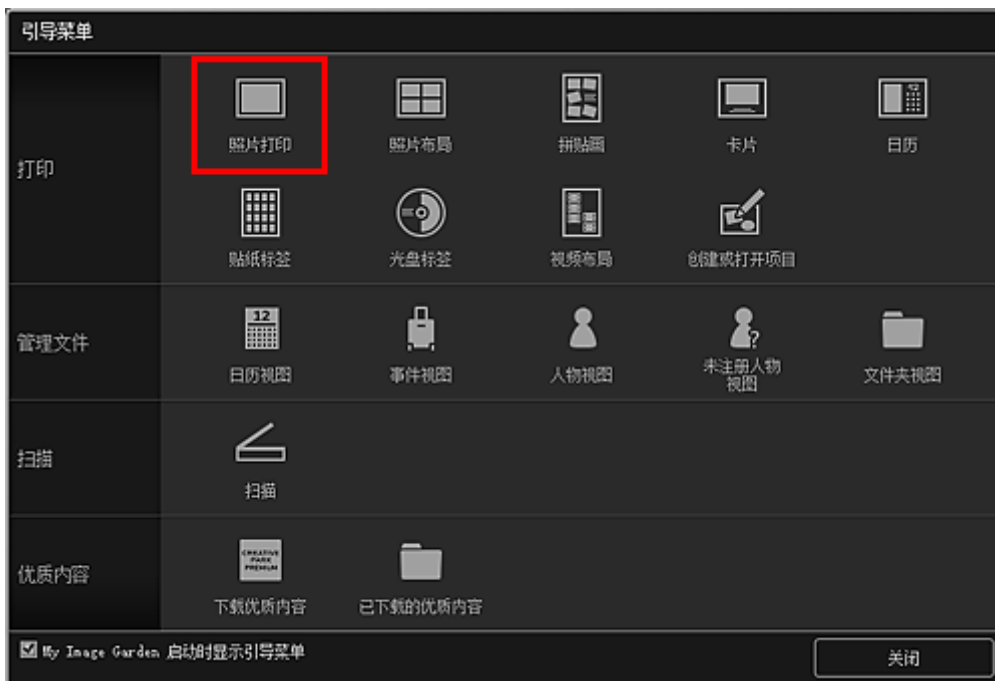
## 打印照片和文档

轻松打印喜爱的照片。

也可以打印在 My Image Garden 中创建的文档(PDF 文件)。



1. 确保打印机已开启。
2. [启动 My Image Garden。](#)
3. 从引导菜单屏幕中单击照片打印。



4. [选择要打印的图像或 PDF 文件。](#)
5. 单击打印。



出现打印设置对话框。

### ▶▶▶ 注释

- 从文件夹视图打印的示例。
- 打印受密码保护的 PDF 文件时，需要输入密码。

■ 打开/编辑受密码保护的 PDF 文件

6. 指定要打印的份数、要使用的打印机和纸张以及其他设置。



## »» 注释

- 有关打印设置对话框的详细资料，请参见打印设置对话框。

7. 装入纸张。

8. 单击打印。

## »» 重要事项

- 如果一次打印大量高分辨率图像，打印可能会中途暂停。
- 如果执行有边距布局打印，上下或左右边距的宽度可能不一致。

## »» 注释

- 根据需要可以在打印前修正或增强图像。

- [修正/增强照片](#)

- 使用特殊滤镜增强照片

- 如果打印纸张存放的时间较长，可能会随时间而褪色。

打印后，彻底晾干纸张并将其存放或陈列在温度和湿度都适当的室内，避免高温、高湿和阳光直射。为避免直接暴露在空气中，建议将纸张存放在影集、塑料文件夹、相框或其他容器内。



## 打印光盘标签(CD/DVD/BD)

使用喜爱的照片创建并打印个性化光盘标签(CD/DVD/BD)。

### 注 释

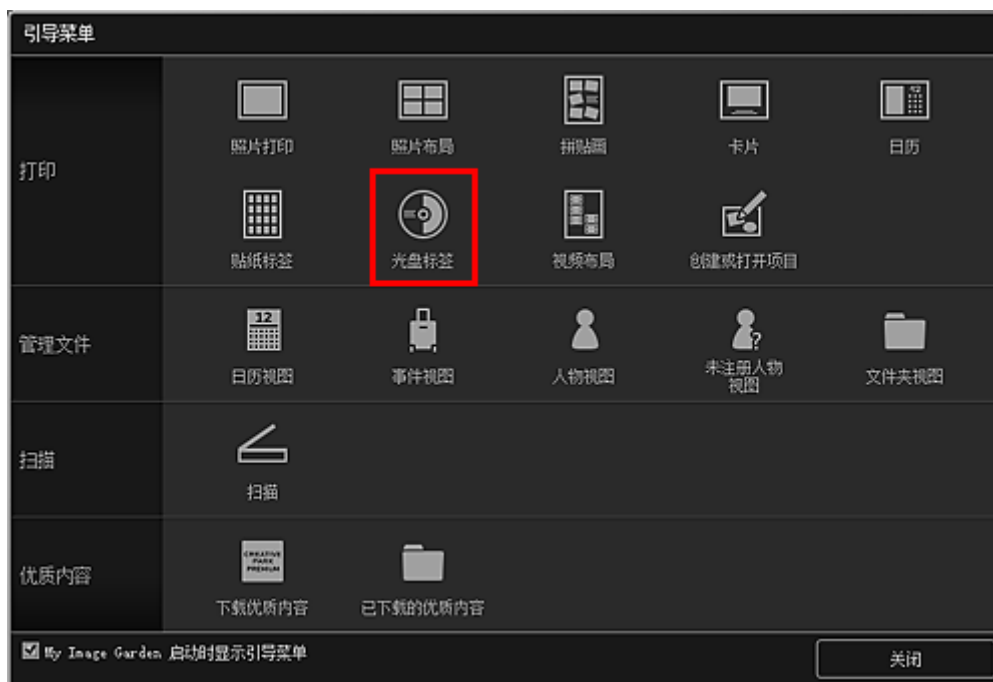
- 该功能仅适用于支持的型号。



### 重要事项

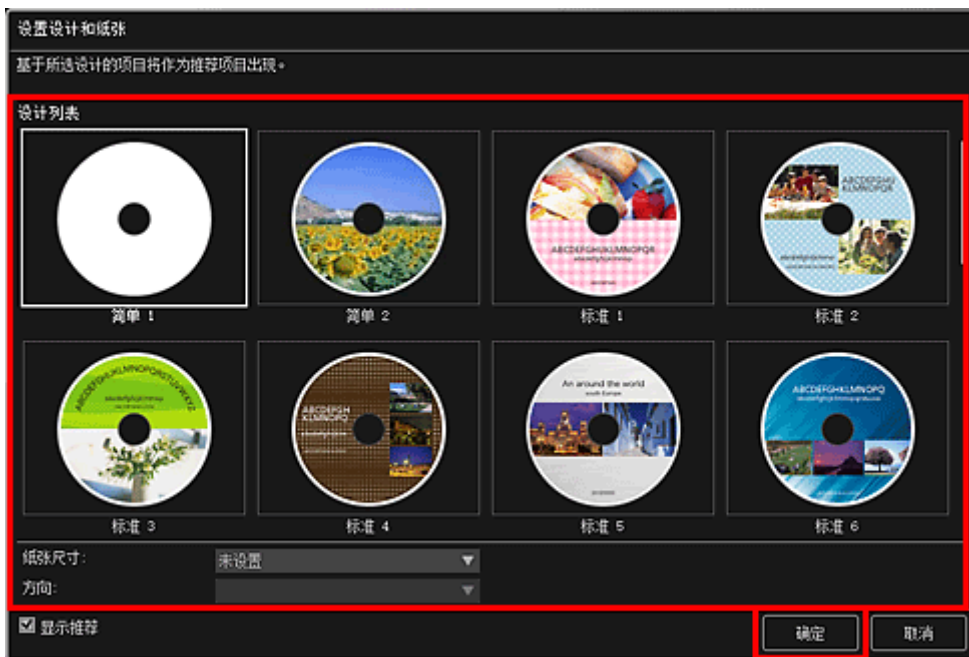
- 显示提示您加载可打印光盘的信息时，再放置光盘托盘。在打印机执行操作时装入可打印光盘可能会损坏打印机。
- 要安装或取下光盘托盘的详细资料，请单击主页返回所用型号的在线手册页首，并搜索“放置可打印光盘”进行参考。

- [启动 My Image Garden。](#)
- 从引导菜单屏幕中单击光盘标签。



出现设置设计和纸张对话框。

3. 指定设计和纸张尺寸等设置，然后单击确定。



光盘标签(CD/DVD/BD)出现在项目编辑屏幕中。

►►► 注释

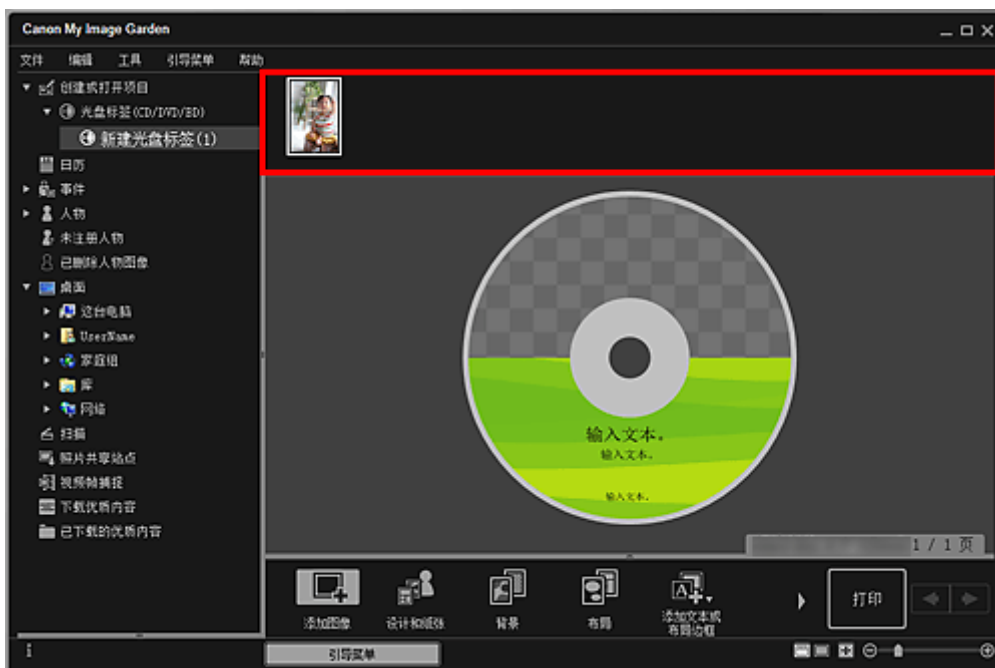
- 根据所选图像的照片信息或分析结果，可能无法获得预期布局。

4. 从**添加图像**中选择要用于光盘标签(CD/DVD/BD)的图像。

图像将显示在素材区域中。

5. 从素材区域拖动图像并将其拖拽至所需布局边框中。


将图像移至布局画框后，图像上出现箭头图标。



## 6. 根据个人喜好编辑项目。



### 注 释

- 单击屏幕底部的高级...会显示高级设置对话框，可以在其中设置打印区域。如果未显示高级...，请单击 (向右滚动)。
- 在某些情况下，如屏幕左侧的全局菜单中的未注册人物中出现识别人物时，由于不会对未完成分析的图像应用自动放置，可能无法获得预期效果。
- 要交换自动放置的图像，请参见插入图像。

## 7. 单击屏幕右下方的打印。

出现打印设置对话框。

## 8. 指定要打印的份数、要使用的打印机和纸张以及其他设置。



### 注 释

- 有关打印设置对话框的详细资料，请参见打印设置对话框。

## 9. 单击打印。

出现信息时，放置光盘托盘。



## 注釋

- 根据所用型号的不同，显示的屏幕会有所不同。

## 相关主题

- 项目编辑屏幕

## 创建和打印项目

可以使用喜爱的照片轻松创建个性化项目并进行打印。

在**日历视图**、**事件视图**、**人物视图**、**未注册人物视图**或**文件夹视图**中选择一个或多个图像，然后单击屏幕底部的**新建作品**以选择要创建的项目。

### ►► 注释

- 也可以通过从**创建或打开项目**视图选择项目的类型和设计来插入图像。

可以创建并打印如下项目。

### 以多种布局打印照片

可以在喜爱的照片上打印日期或以多种布局打印喜爱的照片。



### 打印拼贴画

可以使用喜爱的照片创建拼贴画并进行打印。



### 打印卡片

可以使用喜爱的照片创建周年纪念卡和年度事件卡并进行打印。



## 打印日历

可以使用有纪念意义的照片创建个性化日历并进行打印。



## 打印贴纸标签

可以在贴纸标签页上打印喜爱的照片以创建个性化贴纸标签。



## 以电影布局打印

可以使用类似胶片或剧院的布局打印喜爱的照片。





## 打印纸模型

可以打印下载的优质内容(纸模型), 并创建三维作品。



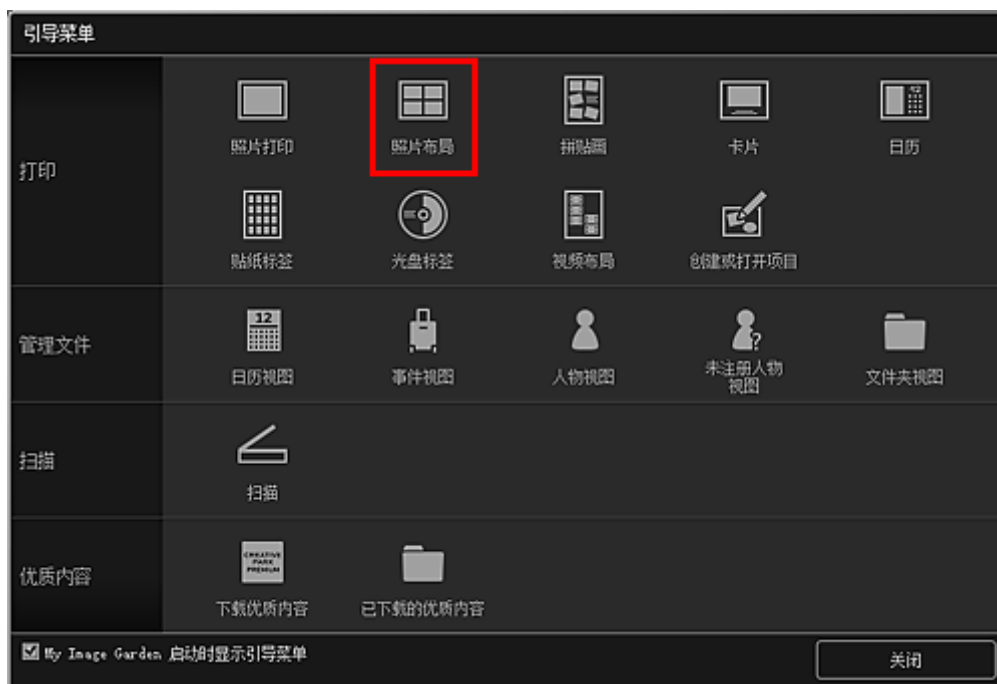


## 以多种布局打印照片

可以在喜爱的照片上打印日期或以多种布局打印喜爱的照片。

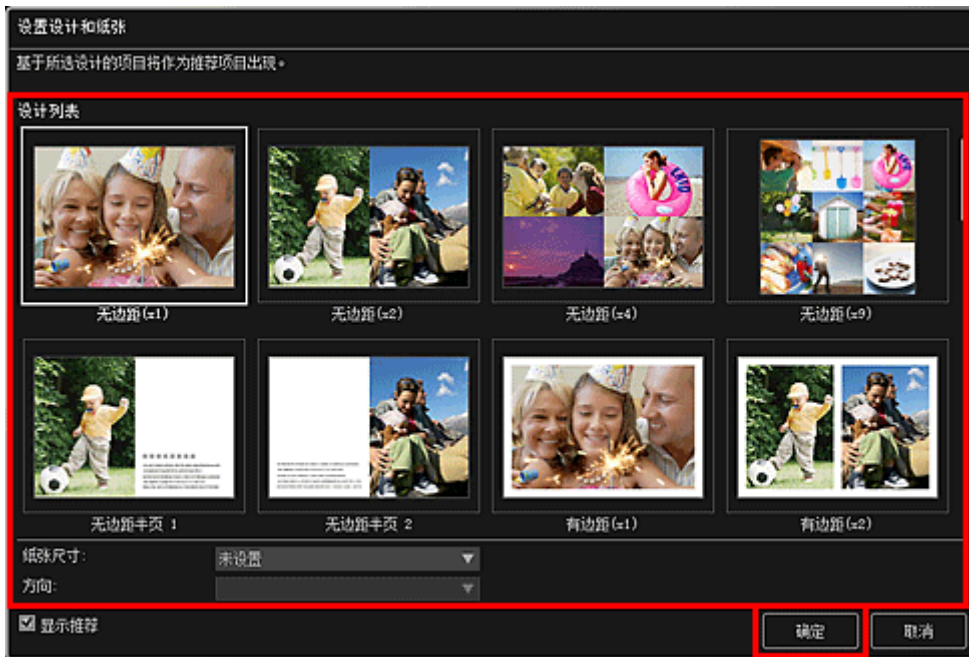


1. [启动 My Image Garden。](#)
2. 从引导菜单屏幕中单击**照片布局**。



出现**设置设计和纸张**对话框。

3. 指定**设计和纸张尺寸**等设置，然后单击**确定**。



所选设计会出现在项目编辑屏幕中。

### 注 释

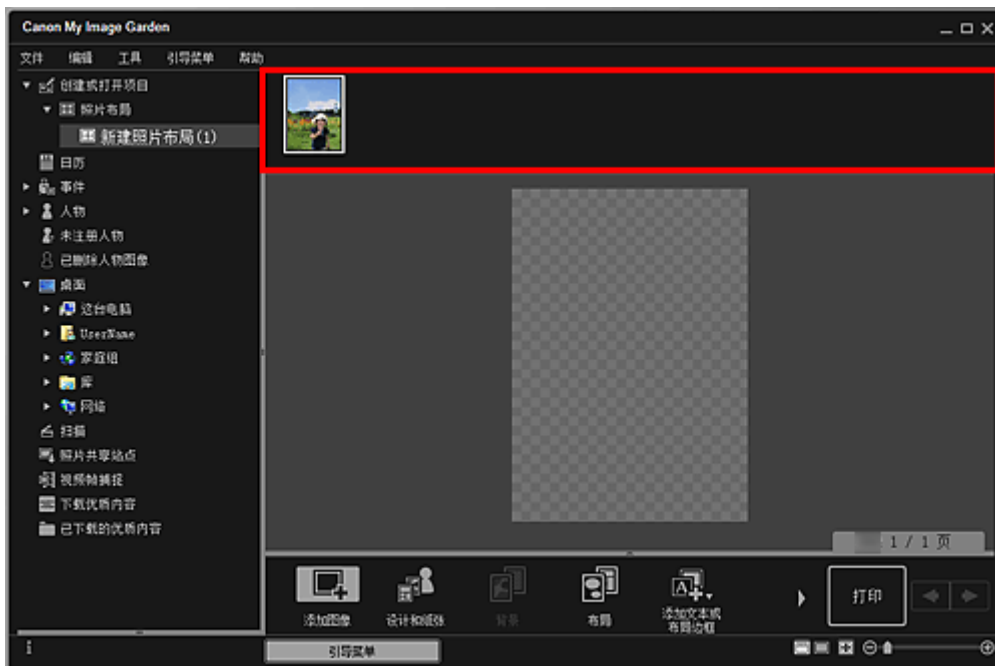
- 根据所选图像的照片信息或分析结果，可能无法获得预期布局。

#### 4. 通过添加图像选择要打印的图像。

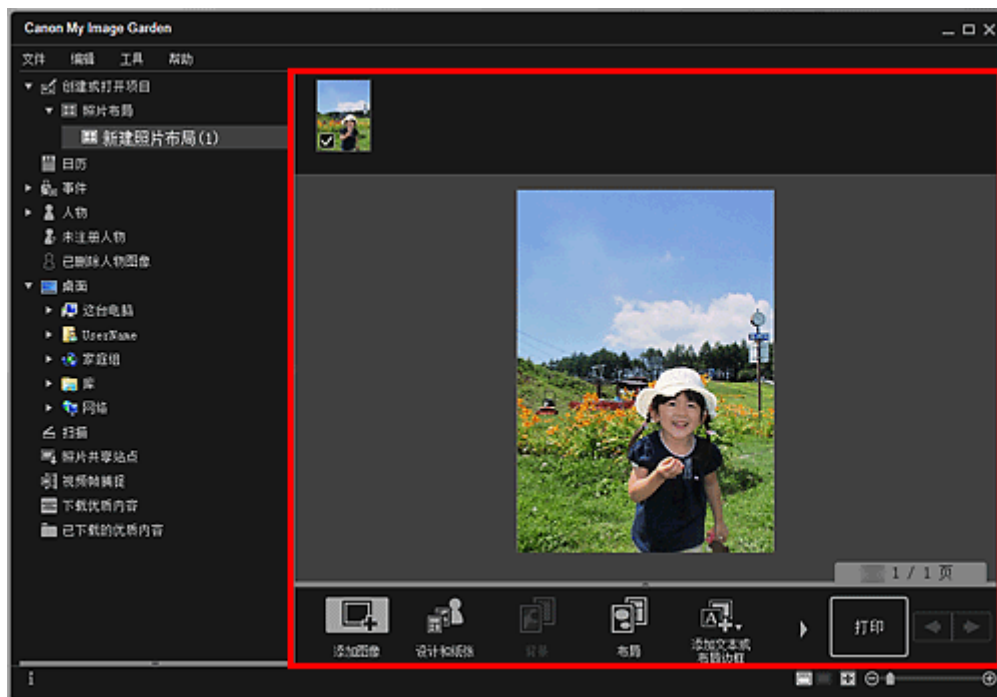
图像将显示在素材区域中。

#### 5. 拖动素材区域中的图像，然后将其拖拽至项目的布局边框中。

将图像移至布局画框后，图像上出现箭头图标。



## 6. 根据个人喜好编辑项目。

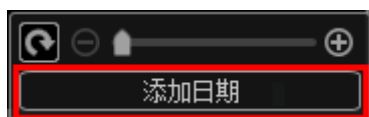


### »» 注释


- 在某些情况下，如屏幕左侧的全局菜单中的未注册人物中出现识别人物时，由于不会对未完成分析的图像应用自动放置，可能无法获得预期效果。
- 要交换自动放置的图像，请参见插入图像。

## 7. 根据个人喜好添加日期。

选择要添加日期的图像以显示图像编辑工具。单击**添加日期**以添加复选标记；日期添加至该图像。



### »» 注释

- 在通过单击屏幕底部的高级...而显示的高级设置对话框中，可以对要打印的日期文字进行高级设置，或设置为在所有图像上打印日期。使用 ID 照片设计时，也可以将相同图像添加到页面内的所有边框中，或者将为图像设置的角度和尺寸应用到页面内同一图像的所有副本中。如果未显示高级...，请单击 (向右滚动)。

## 8. 单击屏幕右下方的打印。

出现打印设置对话框。

## 9. 指定要打印的份数、要使用的打印机和纸张以及其他设置。



### 注釋

- 有关打印设置对话框的详细资料，请参见打印设置对话框。

10. 单击打印。

### 相关主题

- 项目编辑屏幕

## 使用多种功能

- ▶ 扫描照片和文档
  - 使用自动扫描轻松扫描
  - 扫描照片
  - 扫描文档
- ▶ 编辑项目
  - 设置设计和主要人物
  - 插入图像
- ▶ 修正/增强照片
- ▶ 裁剪照片
- ▶ 创建/编辑 PDF 文件
- ▶ 从图像中提取文本(OCR 功能)

## 扫描照片和文档

使用 My Image Garden 轻松扫描照片、文档和其他项目。

- [使用自动扫描轻松扫描](#)
- [扫描照片](#)
- [扫描文档](#)
- [使用收藏夹设置扫描](#)
- 裁剪扫描的图像

### »» 注释

- 从**扫描**视图使用**拼接**功能以扫描大于稿台玻璃的项目的左半边和右半边，然后再将扫描的图像重新合并成一幅图像。有关详细资料，请单击主页返回所用型号的在线手册页首，并搜索“扫描大于稿台玻璃的项目(图像拼接)”进行参考。
- 单击**扫描**视图中的**驱动程序**以启动 ScanGear(扫描仪驱动程序)，然后通过指定输出尺寸、图像修正和其他设置进行扫描。有关详细资料，请单击主页返回所用型号的在线手册页首，并搜索“使用应用程序软件扫描(ScanGear)”进行参考。

## 使用自动扫描轻松扫描

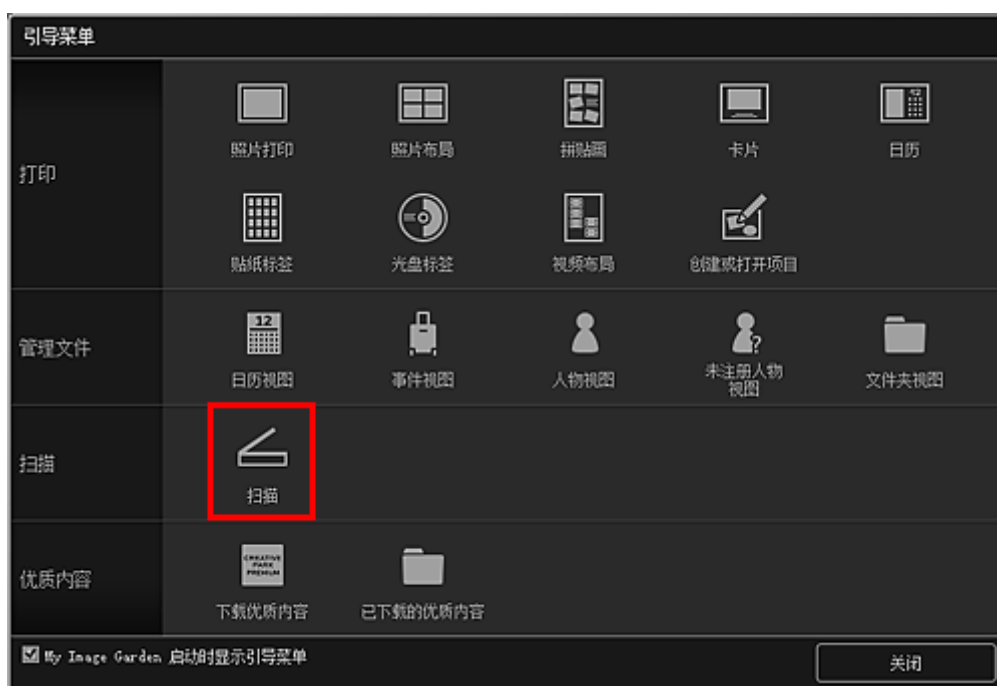
可以通过自动检测项目类型轻松进行扫描。

1. 确保扫描仪或打印机已开启。
2. 将项目放置在扫描仪或打印机的稿台玻璃或自动输稿器上。

### »» 注释

- 有关如何放置项目的详细资料，请单击主页返回所用型号的在线手册页首，并搜索“放置项目(从计算机扫描时)”进行参考。

3. [启动 My Image Garden。](#)
4. 从引导菜单屏幕中单击**扫描**。

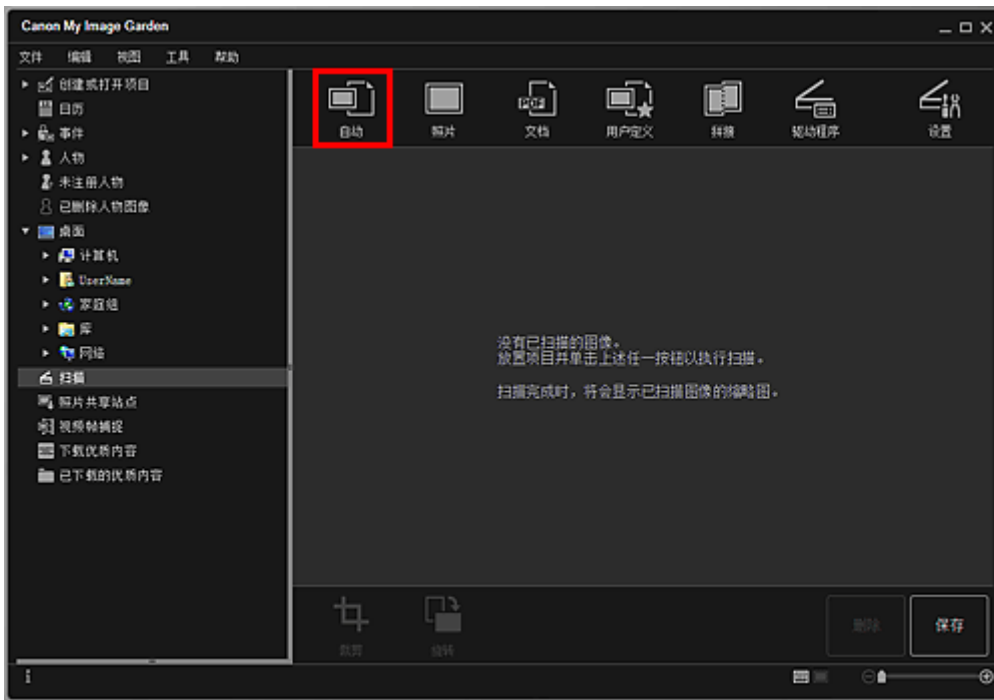


视图切换至**扫描**。

### »» 注释

- 从主屏幕的全局菜单中单击**扫描**也会切换至**扫描**视图。

5. 单击**自动**。

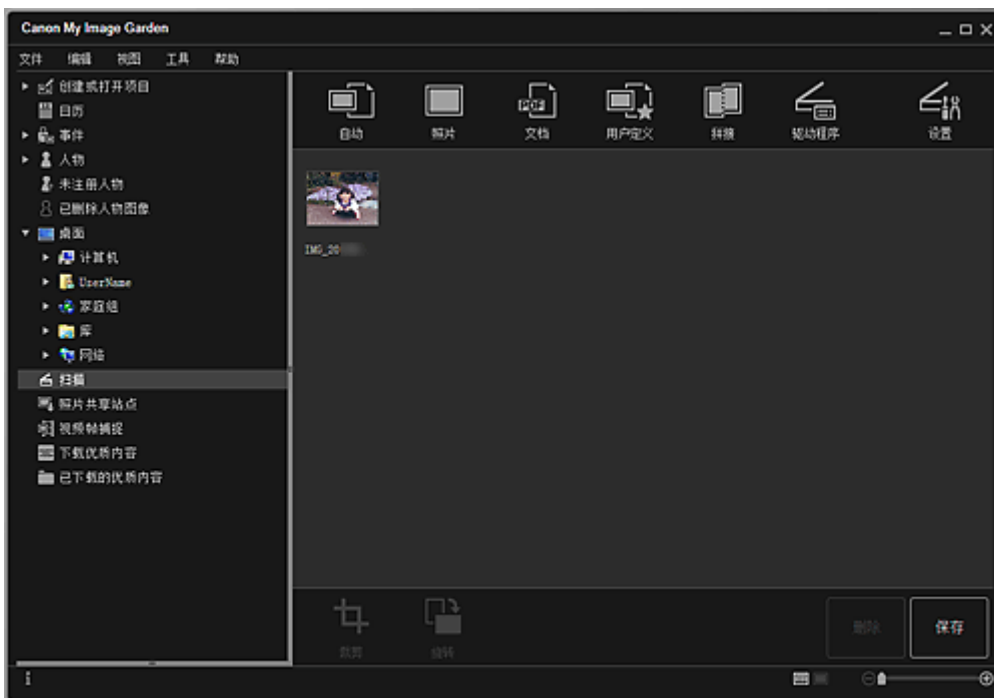


扫描开始。

### 注 释

- 要指定扫描设置，请单击主页返回所用型号的在线手册页首，并搜索“设置(自动扫描)对话框”进行参考。
- 单击**取消**以取消扫描。

扫描完成后，图像以缩略图的形式出现。



### 注 释

- 每单击一次**旋转**，均可将所选图像顺时针旋转 90 度。



- 可以裁剪图像。
  - 裁剪扫描的图像
- 单击**保存**以保存旋转或裁剪后的扫描图像。
  - **保存对话框(扫描视图)**
- 可以在从**工具**菜单选择**自定格式...**后显示的**自定格式**对话框的**高级设置**选项卡中设置扫描图像的保存位置。有关设置步骤的详细资料，请参阅“**高级设置选项卡**”。

## »» 注释

- 也可以打印扫描的图像。右键单击缩略图并从显示的菜单中选择**打印...**以显示打印设置对话框。选择要使用的打印机和纸张，然后单击**打印**。

## 相关主题

- **扫描视图**

# 扫描照片

可以使用适用于照片的设置进行扫描。

## »» 注释

- 甚至可以一次扫描两张或更多张照片(小型项目)。有关详细资料,请单击主页返回所用型号的在线手册页首,并搜索“一次扫描多个项目”进行参考。

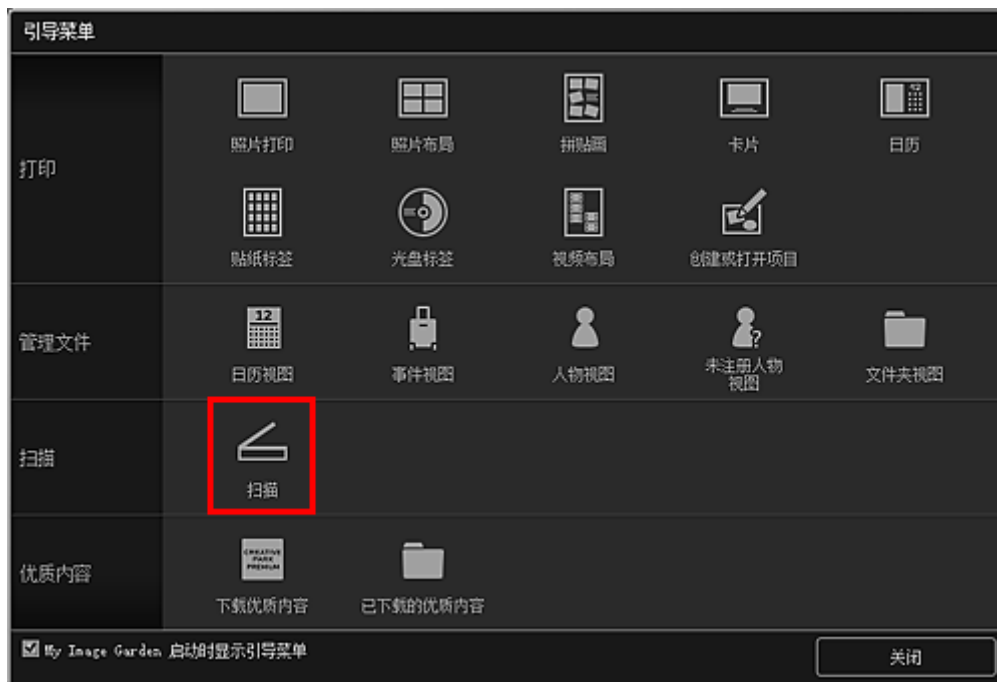
1. 将项目放置在稿台玻璃上。

## »» 注释

- 有关如何放置项目的详细资料,请单击主页返回所用型号的在线手册页首,并搜索“放置项目(从计算机扫描时)”进行参考。

2. [启动 My Image Garden。](#)

3. 从引导菜单屏幕中单击扫描。

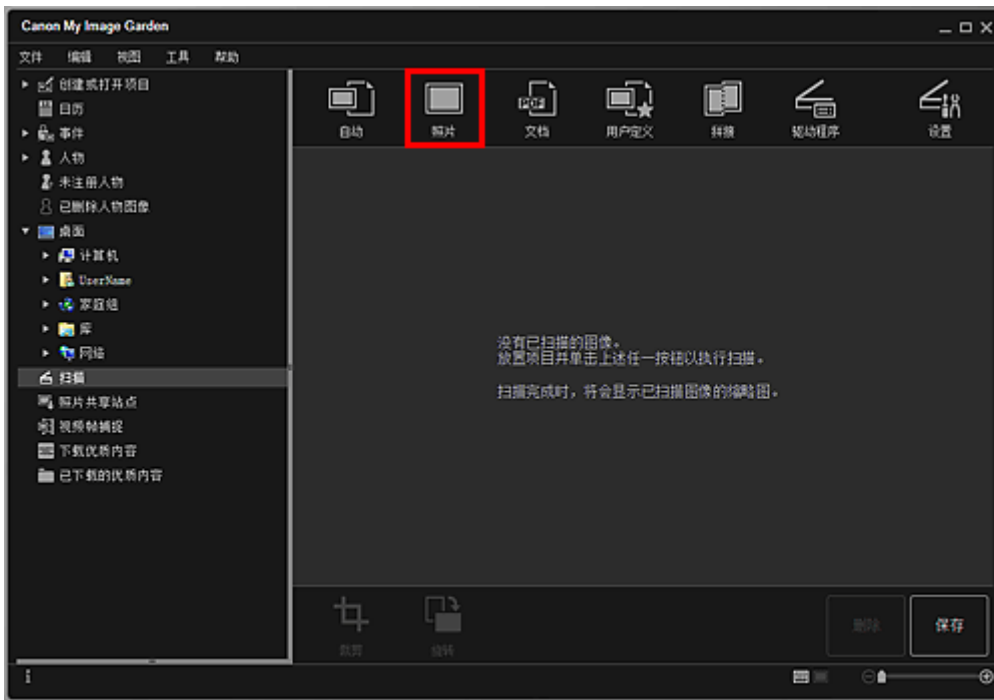


视图切换至扫描。

## »» 注释

- 从主屏幕的全局菜单中单击扫描也会切换至扫描视图。

4. 单击照片。

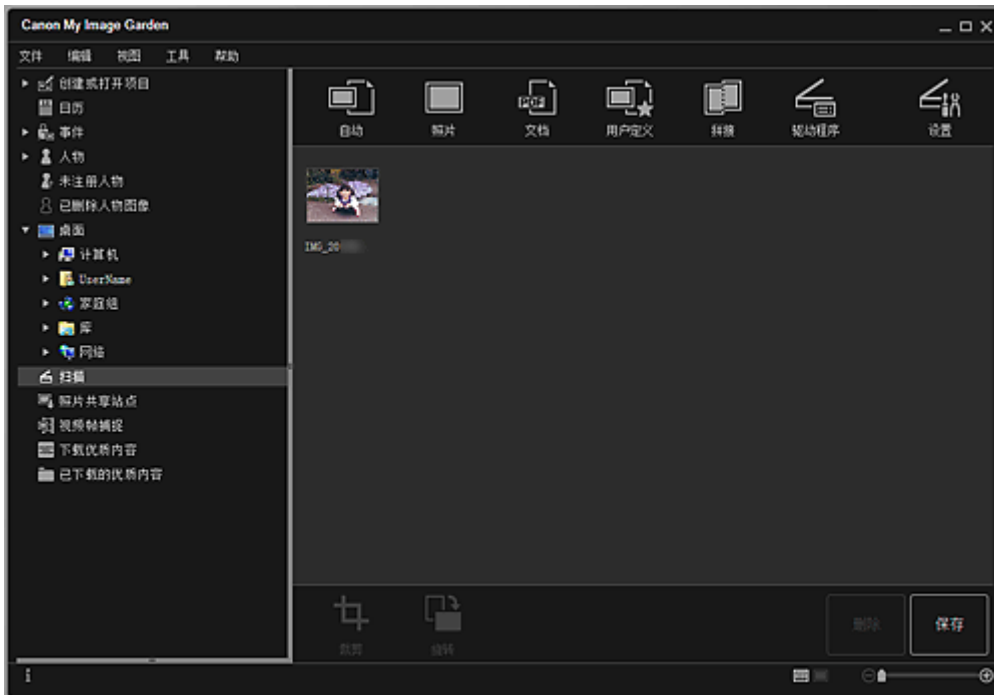


扫描开始。

### 注 释


- 单击**取消**以取消扫描。

扫描完成后，图像以缩略图的形式出现。



### 注 释

- 每单击一次**旋转**，均可将所选图像顺时针旋转 90 度。
- 可以裁剪图像。

 裁剪扫描的图像

- 单击**保存**以保存旋转或裁剪后的扫描图像。

#### ■ 保存对话框(扫描视图)

- 可以在从**工具**菜单选择**自定格式...**后显示的**自定格式**对话框的**高级设置**选项卡中设置扫描图像的保存位置。有关设置步骤的详细资料，请参阅“**高级设置选项卡**”。

## »» 注释

- 也可以打印扫描的图像。右键单击缩略图并从显示的菜单中选择**打印...**以显示打印设置对话框。选择要使用的打印机和纸张，然后单击**打印**。

## 相关主题

### ■ 扫描视图

## 扫描文档

可以使用适用于文档的设置进行扫描。

### »» 注释

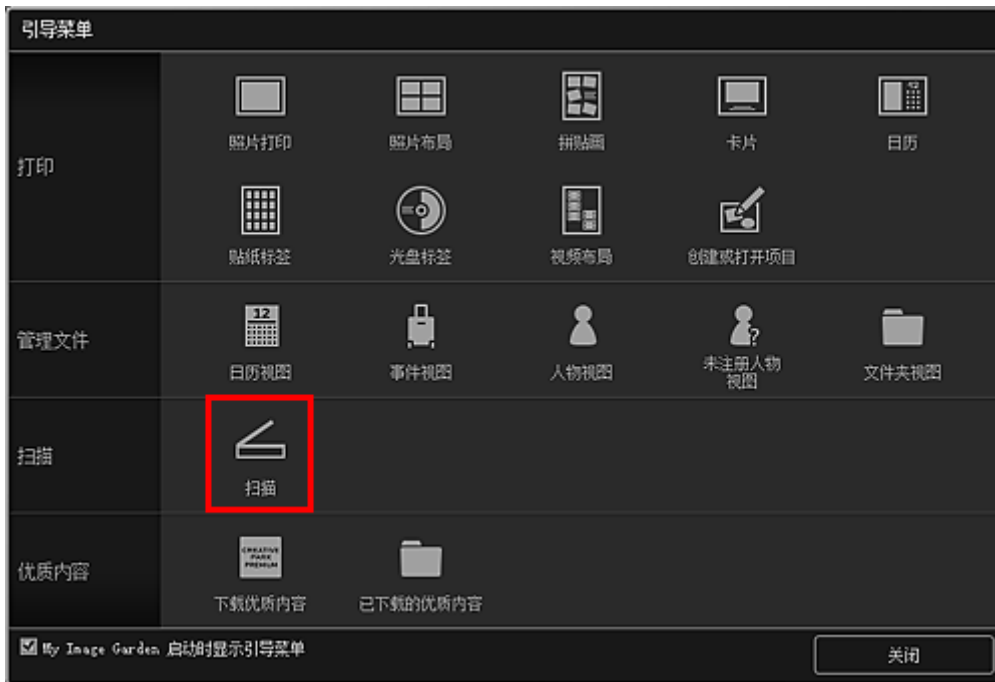
- 甚至可以一次扫描两个或更多个小型项目。有关详细资料，请单击主页返回所用型号的在线手册页首，并搜索“一次扫描多个项目”进行参考。

1. 将项目放置在稿台玻璃或自动输稿器上。

### »» 注释

- 有关如何放置项目的详细资料，请单击主页返回所用型号的在线手册页首，并搜索“放置项目(从计算机扫描时)”进行参考。

2. [启动 My Image Garden。](#)
3. 从引导菜单屏幕中单击扫描。

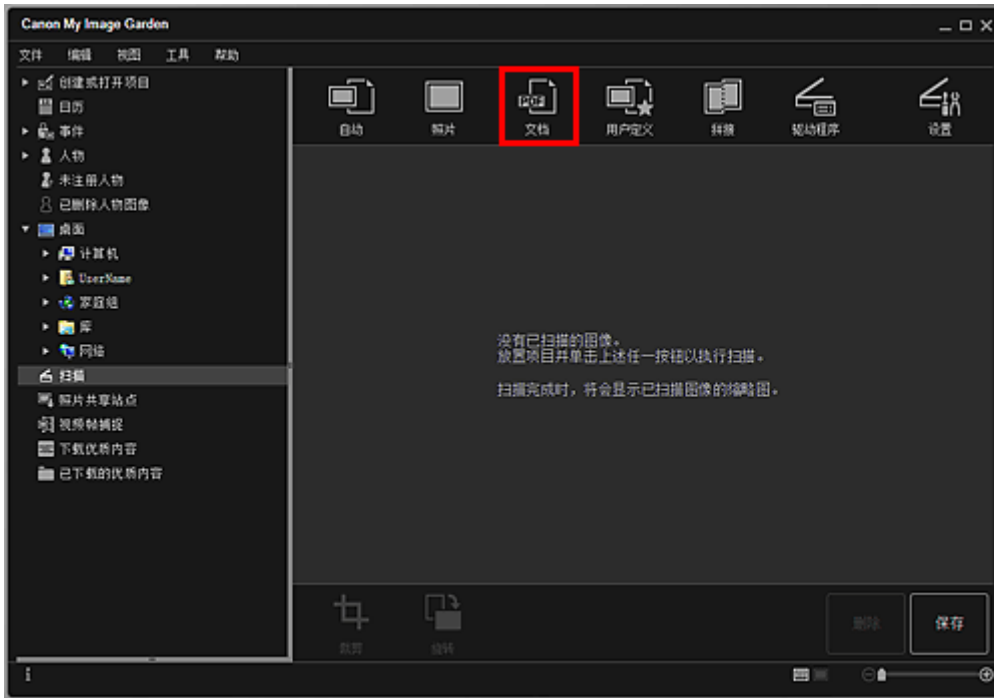


视图切换至扫描。

### »» 注释

- 从主屏幕的全局菜单中单击扫描也会切换至扫描视图。

4. 单击文档。

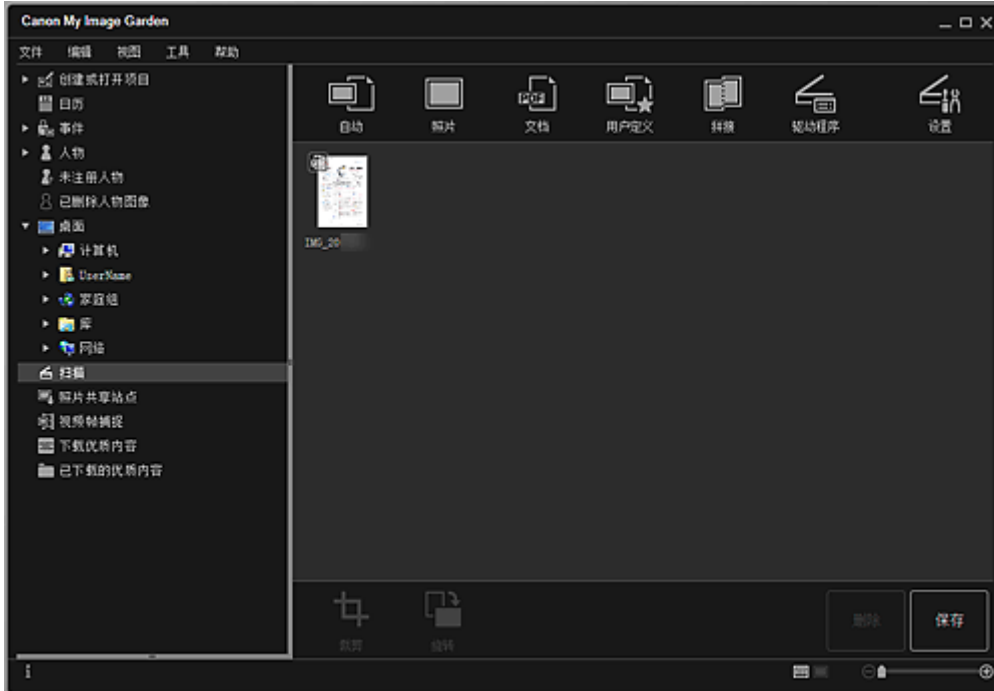


扫描开始。

### 注 释

- 单击**取消**以取消扫描。

扫描完成后，图像以缩略图的形式出现。



### 注 释

- 单击**保存**以保存扫描的图像。

■ **保存对话框(扫描视图)**

- 可以在从**工具**菜单选择**自定格式...**后显示的**自定格式**对话框的**高级设置**选项卡中设置扫描图像的保存位置。有关设置步骤的详细资料，请参阅“**高级设置选项卡**”。

## »» 注释

- 也可以打印扫描的图像。右键单击缩略图并从显示的菜单中选择**打印...**以显示打印设置对话框。选择要使用的打印机和纸张，然后单击**打印**。

## 相关主题

- **扫描视图**

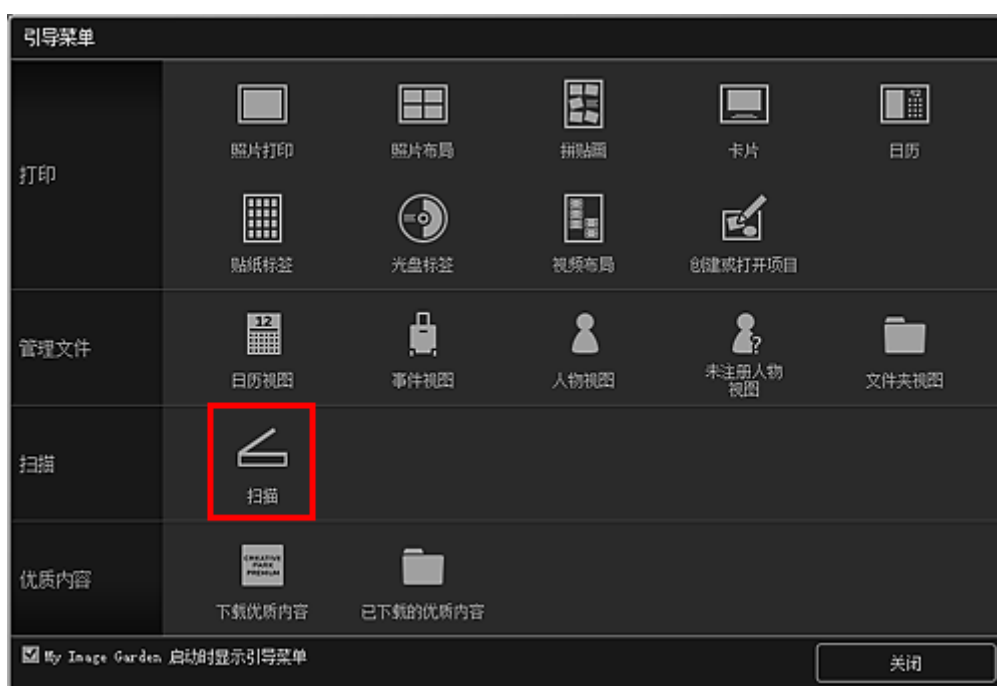
## 使用收藏夹设置扫描

可以通过预先保存喜爱的常用设置来用其进行扫描。

### »» 注释

- 可以在单击**设置**后显示的对话框中保存收藏夹设置。有关详细资料，请单击主页返回所用型号的在线手册页首，并搜索“设置(用户定义扫描)对话框”进行参考。

1. 将项目放置在稿台玻璃或自动输稿器上。
2. [启动 My Image Garden。](#)
3. 从**引导菜单**屏幕中单击**扫描**。



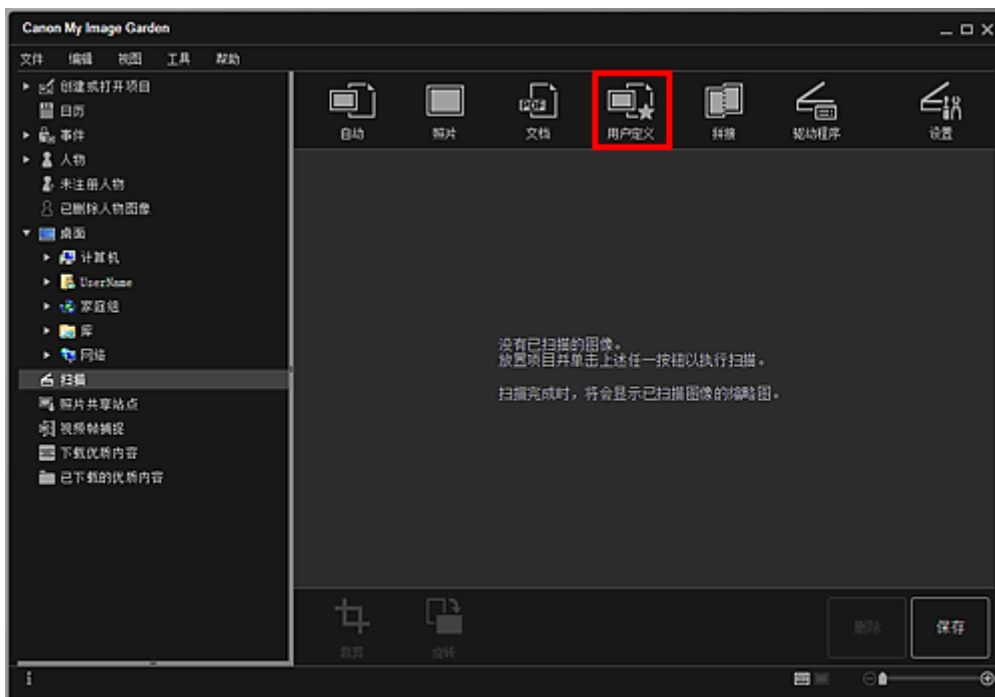
视图切换至**扫描**。

### »» 注释

- 从主屏幕的全局菜单中单击**扫描**也会切换至**扫描**视图。

4. 单击**用户定义**。



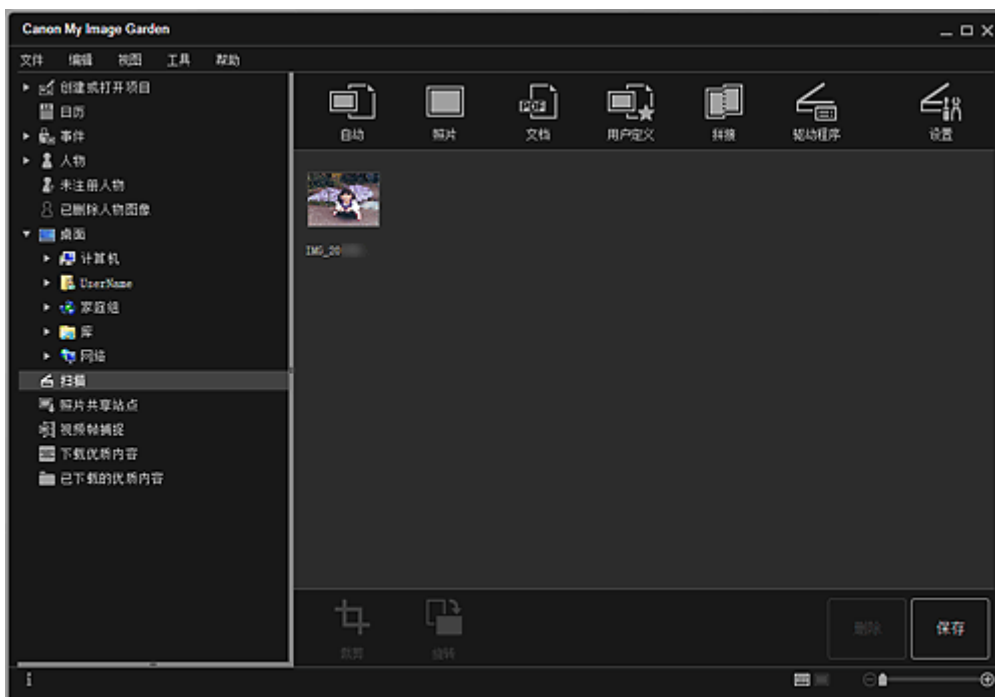


扫描开始。

### 注 释


- 单击**取消**以取消扫描。

扫描完成后，图像以缩略图的形式出现。



### 注 释

- 每单击一次**旋转**，均可将所选图像顺时针旋转 90 度。
- 可以裁剪图像。

 裁剪扫描的图像

- 单击**保存**以保存旋转或裁剪后的扫描图像。

#### ■ 保存对话框(扫描视图)

- 可以在从**工具**菜单选择**自定格式...**后显示的**自定格式**对话框的**高级设置**选项卡中设置扫描图像的保存位置。有关设置步骤的详细资料，请参阅“**高级设置选项卡**”。

## »» 注释

- 也可以打印扫描的图像。右键单击缩略图并从显示的菜单中选择**打印...**以显示打印设置对话框。选择要使用的打印机和纸张，然后单击**打印**。

## 相关主题

### ■ 扫描视图

## 修正/增强照片

可以修正红眼或调整图像的亮度和对比度。

在项目编辑屏幕的编辑区域、设置为**日视图**的**日历视图**、**事件视图**的扩展显示、**人物视图**的扩展显示、**未注册人物视图**或**文件夹视图**中选择一个或多个图像，然后单击屏幕底部的**修正/增强**以显示**修正/增强图像**窗口。可以在**修正/增强图像**窗口做下列修正和增强。

### 重要事项

- 选择 PDF 文件时此功能不可用。
- 根据所选图像的大小，可能会由于内存不足而无法进行修正/增强。

### 自动照片修复

可以基于拍摄场景分析自动应用适合照片的修正。

#### ■ 使用自动照片修复



### 红眼修正

可以减少由于相机闪光造成的红眼。

#### ■ 使用红眼修正



### 面部增亮

您可以增亮由于明亮背景造成的面部暗淡。

#### ■ 使用面部增亮



## 面部锐化

可以锐化非焦点面部。

### ■ 使用面部锐化



## 面部柔滑

您可以通过减少瑕疵和折皱美化皮肤。

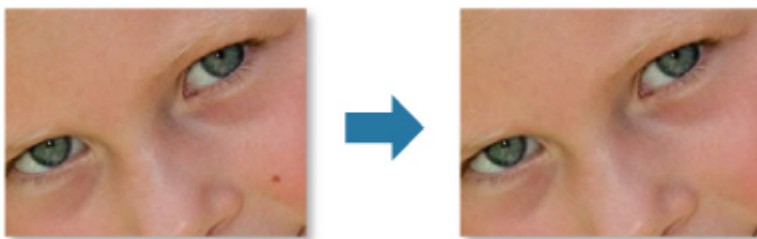
### ■ 使用面部柔滑



## 去除瑕疵

您可以减少黑痣。

### ■ 使用去除瑕疵



## 图像调整

可以调整亮度和对比度、锐化整幅图像等。

您也可以模糊图像轮廓或移除底色。

### ■ 调整图像



## 裁剪

可以选择要保留的图像区域并放弃其余部分。

### ■ [裁剪照片](#)

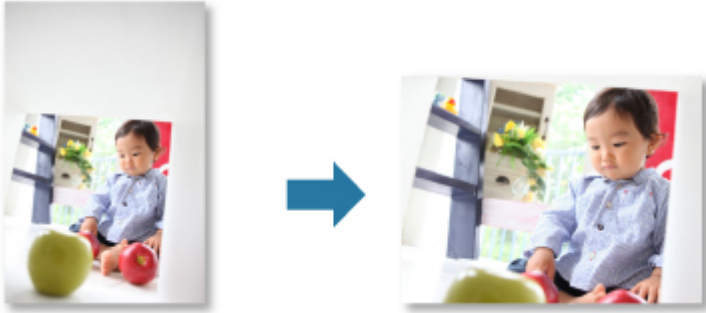


## 相关主题

### ■ [修正/增强图像窗口](#)

## 裁剪照片

裁剪是选择要保留的图像区域并放弃其余部分的行为。



### 重要事项

- 使用优质内容时此功能可能不可用。
- 无法在编辑项目时裁剪图像。

1. [选择要裁剪的图像](#)。
2. 单击屏幕底部的**修正/增强**。

显示**修正/增强图像**窗口。



3. 单击  (裁剪)。

出现**裁剪**窗口。

4. 拖动图像上的白色小方块以指定要裁剪的区域，然后单击**确定**。



### »» 注释

- 单击修正/增强图像窗口中的重置选择的图像可以撤销所有增强。

## 相关主题

- 裁剪窗口

## 创建/编辑 PDF 文件

可以从计算机上保存的图像创建 PDF 文件。也可以在创建的 PDF 文件中添加页面或删除页面以及重新排列页面。

### 重要事项

- 一次最多可以创建或编辑 99 页 PDF 文件。
- 对于 PDF 文件，仅支持使用 My Image Garden 或 IJ Scan Utility 创建的 PDF 文件。不支持在其他应用程序中创建或编辑的 PDF 文件。

### 注释

- 可以选择的文件格式为 PDF、JPEG、TIFF 和 PNG。
- 选择受密码保护的 PDF 文件时，需要输入密码。
  - 打开/编辑受密码保护的 PDF 文件

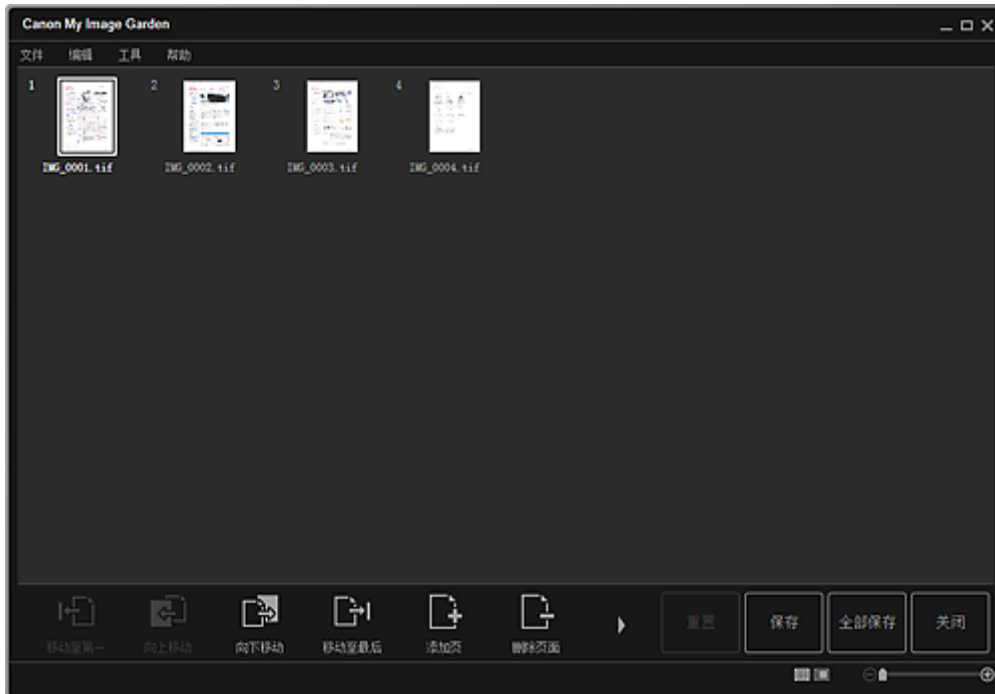
### 1. [选择要用来创建 PDF 文件的图像或要编辑的 PDF 文件。](#)

#### 重要事项

- 无法使用垂直或水平方向分辨率等于或大于 10501 像素的图像。

### 2. 单击屏幕底部的**创建/编辑 PDF 文件**。

视图切换至**创建/编辑 PDF 文件**。



### 3. 根据需要添加或删除页面。

**添加现有图像或 PDF 文件时：**

单击屏幕底部的**添加页**。出现**打开**对话框后，选择要添加的图像或 PDF 文件，然后单击**打开**。



#### 删除页面时：

选择图像，然后单击屏幕底部的**删除页面**。

#### 4. 根据需要更改页面顺序。

通过单击页面，然后使用屏幕左下方的**移动至第一**、**向上移动**、**向下移动**或**移动至最后**，可以更改页面顺序。

也可以通过将页面拖拽到目标位置来更改页面顺序。

#### 5. 单击**保存**或**全部保存**。

##### 仅保存所选的页面时：

单击**保存**以显示**保存**对话框。

##### 保存所有页面时：

单击**全部保存**以显示**保存**对话框。

#### 6. 指定保存设置。

##### ■ 保存对话框(创建/编辑 PDF 文件视图)

#### ▶▶▶ 重要事项

- 如果编辑受密码保护的 PDF 文件，则密码将删除。在**保存**对话框中重设密码。

##### ■ 设置 PDF 文件密码

#### 7. 单击**保存**。

PDF 文件被保存，并且再次出现**创建/编辑 PDF 文件视图**。

#### 8. 单击**关闭**。

**创建/编辑 PDF 文件视图**关闭。



(PDF)标记出现在所保存的 PDF 文件缩略图的左上方。

## 相关主题

### ■ 创建/编辑 PDF 文件视图

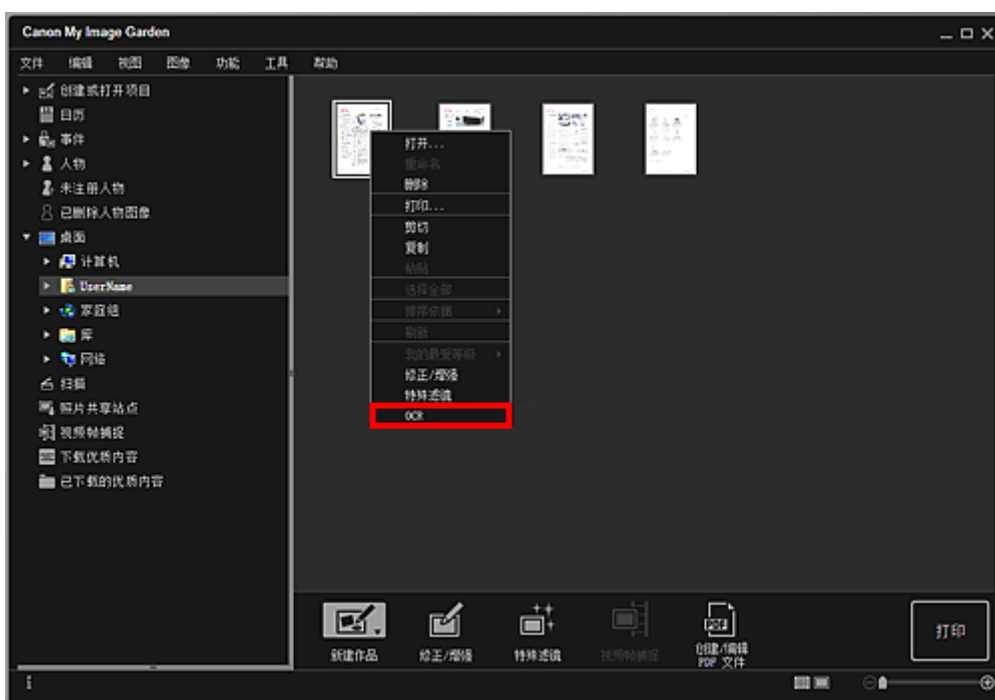
## 从图像中提取文本(OCR 功能)

扫描图像中的文本，并在记事本(Windows 自带程序)中显示。

### 重要事项

- 无法将 PDF 文件转换为文本。
- 根据所选图像的大小，可能无法进行文本转换。

1. [显示要转换为文本的图像](#)。
2. 右键单击要转换为文本的图像，然后从显示的菜单中单击 **OCR**。



记事本(Windows 自带程序)启动并显示可以编辑的文本。

### 注释

- 仅用在**自定义格式**对话框的**高级设置**选项卡中选择的语言写入的文本可以被提取至记事本(Windows 自带程序)。单击**高级设置**选项卡上的**设置...**并根据要扫描的文档语言指定语言。当扫描多个文档时，您可以将提取的文本收集到一个文件。
- 记事本(Windows 自带程序)显示的文本仅用于指导。可能无法正确检测以下文档类型的图像中的文本。
  - 字体大小在 8 磅到 40 磅(分辨率为 300dpi)范围之外的文档
  - 倾斜的文档
  - 倒置的文档或文本处于错误方向的文档(转置的字符)
  - 包含特殊字体、效果、斜体字或手写文本的文档
  - 行间距紧缩的文档
  - 文本背景有色彩的文档
  - 包含多种语言的文档

## 故障排除

### 如何更改 My Image Garden 的设置？

可以在**自定义格式**对话框中更改 My Image Garden 的设置。

### 图像不出现

安装后会立即执行图像分析。因此，在图像分析完成前，**日历视图**或**未注册人物视图**中可能不会出现图像。

#### »» 注释

- 分析图像时，屏幕左侧的全局菜单中的**未注册人物**中出现**识别人物**。

要在**日历视图**、**未注册人物视图**或**人物视图**中显示图像，或使用项目推荐功能，需要对保存图像的文件夹执行图像分析。确保在**自定义格式**对话框的**图像分析设置**选项卡中对保存图像的文件夹执行图像分析。

### 图像分析(面部识别)失败

在**自定义格式**对话框的**图像分析设置**选项卡中调整面部识别比例和其他设置。

### 无法正确扫描

有关详细资料，请单击主页返回所用型号的在线手册页首，并搜索“扫描的问题”进行参考。

### 无法使用优质内容

有关详细资料，请参阅“无法使用优质内容”。