

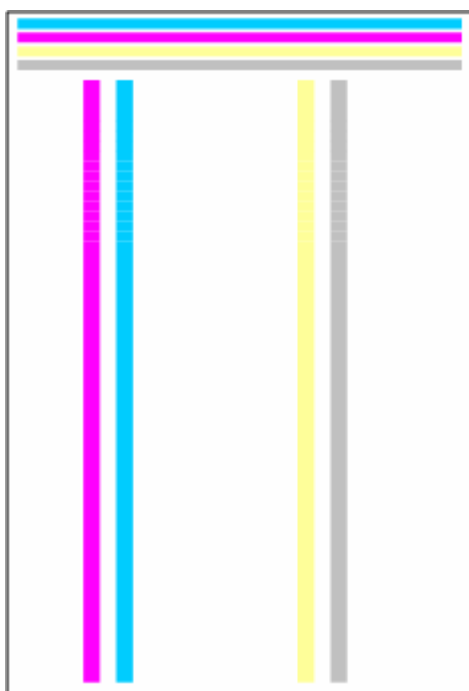
---

## Checking a Sample Printout

---

Print out a mono-color pattern (all K, C, M, or Y), which will clarify if the cause is a problem with one of the AIO cartridges, Image transfer belt, image transfer roller, or the fusing unit. A sample page is provided with the printer driver's CD. You can print the sample page from the printer driver's CD. Before printing, you have to adjust the printer driver settings to make the problem become obvious. For details about adjusting the settings, refer to "Printer Driver Setting for Printing a Sample" described below.

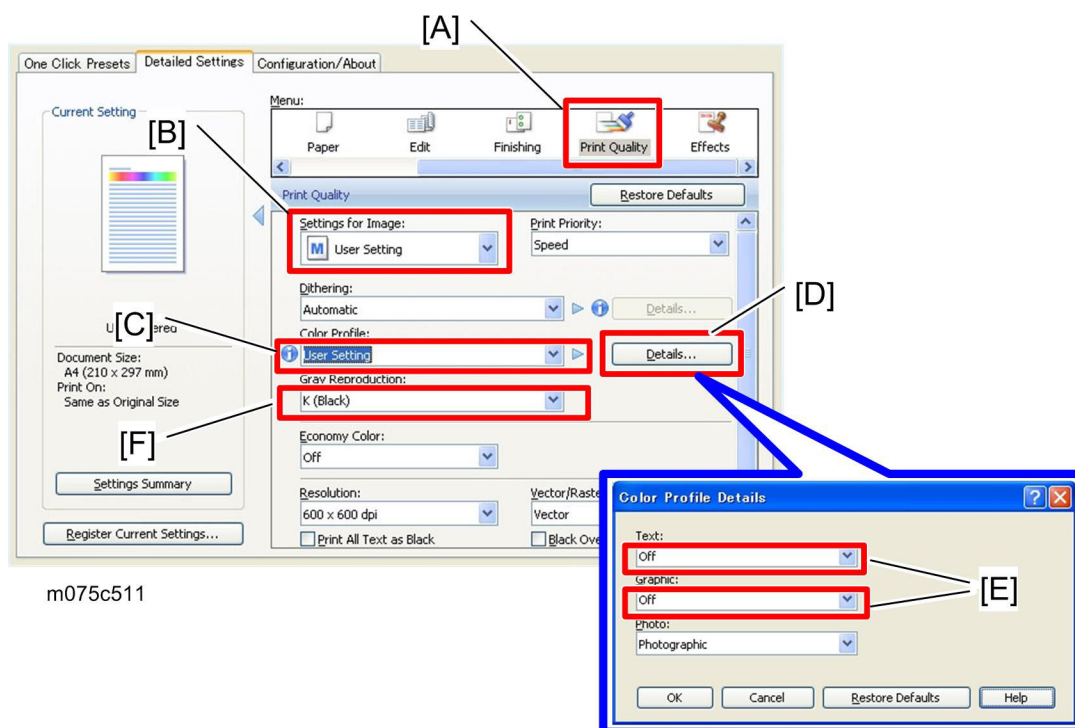
- Occurs with 1-3 colors: AIO cartridge(s) failure
- Occurs with all four colors: Image transfer belt, transfer roller or fusing unit failure



g165c502

## Printer Driver Setting for Printing a Sample

1. Click "Properties" on the printer driver.
2. Click "Printing Preferences" in the property screen.
3. Click "Detailed Settings" tab in the printing preferences screen.



4. Click "Print Quality" [A] in the Menu.
5. Select "User Setting" from the pull-down menu in the "Settings for Image" [B].
6. Select "User Setting" from the pull-down menu in the "Color Profile" [C].
7. Press "Details..." [D], and then select "Off" from the pull-down menus [E] in the "Text:" and "Graphic".
8. Select "K (Black)" from the pull-down menu in the "Gray Reproduction" [F].

[Sample chart A PDF file](#)