

执行标准号：鼠标GB/T 26245-2010

产品质保 (Product Warranty)

感谢您对黑爵产品的信任与支持, 为了让您放心使用本产品, 更好地保障您的权益, 我公司将严格遵守并执行相关规定, 实行售后服务。

1. 服务有效期: 自购买之日起质量保证12个月
2. 服务内容: 按微型计算机商品维修更换退货责任规定进行服务
3. 不属于服务之范围:
 - a. 已经超出有效服务或免费维修期的;
 - b. 未按照正确使用说明使用、维护、保管导致故障或损坏的;
 - c. 非本司授权维修机构维修导致的故障或损坏;
 - d. 质保卡上无经销商资料及盖章之产品;
 - e. 擅自涂改三包凭证内容的;
 - f. 由于不可抗力(如自然灾害等)原因造成产品之不良;
 - g. 人为因素导致产品不良(如操作失误、磕碰、输入不合适电压等);
 - h. 其他非产品设计、技术、制造、质量等问题导致的故障或损坏。

质保卡 (Warranty Card)

产品型号: _____

购买日期: _____

客户姓名: _____

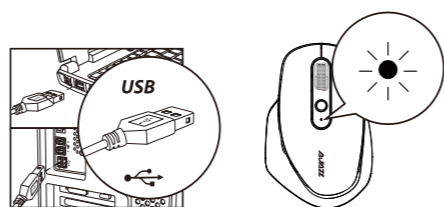
联系电话: _____

联系地址: _____

制造商: 深圳市黑爵同创电子科技有限公司
 地址: 深圳市光明新区公明镇马田北路102号A栋2楼
 电话: 86-755-2740 7340
 执行标准号: GB/T 26245-2010

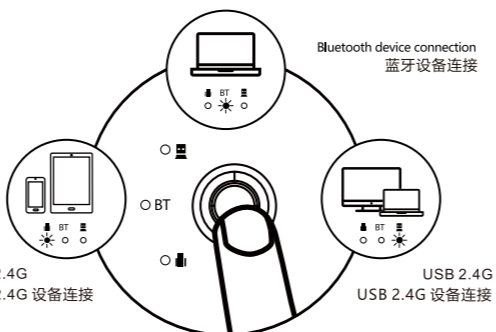


* 本凭证为黑爵产品售后服务的重要依据, 请您妥善保管。
 * 任何产品问题, 可扫码咨询微信公众号小编



模式切换方法 / Mode switching method

完成连接后, 短按鼠标底部多模式切换按钮, 轻松在多个模式设备间切换。
 After the connection is completed, press the multi-mode switch button at the bottom of the mouse to easily switch between multiple mode devices.



Press the button at the bottom of the mouse to easily switch between 3 devices.
 短按滑鼠底部按钮, 轻松切换3种设备

产品特点 / Product features

Wireless transmission of 20m / 20m无线传输

2.4G无线技术可在10米范围内提供可靠的连接且不会受到任何干扰。
 2.4g wireless technology provides a reliable connection within a range of 10 meters without any interference.

High rate of return of 250Hz / 250Hz高速回报率

回报率代表滑鼠与电脑间数据传输速度, 250Hz回报率可以让无线滑鼠在使用中无延迟不卡顿。
 The rate of return means the data transmission speed between the mouse and the computer. However, the rate of return of 250Hz means that the wireless mouse has no delay and frame skip in.

Precise positioning of DPI / DPI精准定位

高精度 800-1200-1600-2400-3200DPI切换, 保证使用过程中迅速定位对象。
 High precision switchover 800-1200-1600-2400-3200DPI, Ensure rapid positioning objects in use process.

Low voltage alarm / 低电压告警

电压低至为3.2V时, 鼠标正面DPI键下方闪烁红色告警灯光。
 When the voltage is low to 3.2V, the red alarm light flash which on the front of DPI button and below the mouse.

基础参数 / Basic Parameters

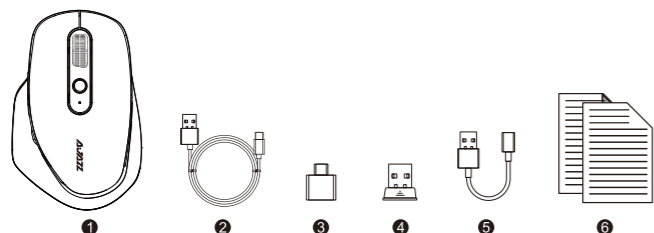
芯片: Nordic NRF51802	Chip: Nordic NRF51802
引擎: 光学	Engine: Optical
鼠标解析度: 800-1200-1600-2400-3200dpi	Mouse Resolution: 800-1200-1600-2400-3200dpi
鼠标按键寿命: 1千万次	The lifetime of mouse button: 10 million times
电压: 3.7V	Electric capacity: 3.7V
鼠标尺寸: 118.6x76.9x46.1mm	Mouse size: 118.6x76.9x46.1mm
鼠标重量: 116±2g	Mouse weight: 116±2g



i660T

GAMING MOUSE | 吃鸡游戏鼠标

使用说明书
User Manual



包装内含

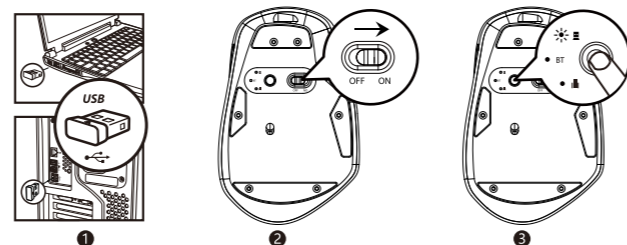
1. 黑爵无线鼠标
2. USB充电线
3. Type-C接收器
4. USB接收器
5. USB转Type-C数据线
6. 快速操作指南

Packaging includes

1. AJAZZ Wireless Mouse
2. USB charging cable
3. Type-C receiver
4. USB receiver
5. USB to type-c data cable
6. Quick guide

蓝牙传输参数 / Bluetooth transmission

传输距离: 10m	Transmission distance: 10m
工作电压: 3.7V	Working voltage: 3.7V
工作电流: 3.0±1mA	Working current: 3.0±1mA
回报率: 125Hz	Return: 125Hz



2.4G连接 / 2.4G connection

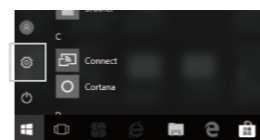
1. 吸塑面罩上取出接收器, 插入电脑USB接口
2. 切换电源开关到ON
3. 按压切换按钮直到白灯亮起, 设备连接完成

1. Take out the receiver and insert it into the USB port of computer.
2. Turn the Power switch to ON
3. Press the mode switch button until the white indicator is on and Connection with this device is complete.

蓝牙连接 / Bluetooth connection

1. 将自行购买的蓝牙接收器, 插入电脑USB接口
2. 切换电源开关到ON
3. 按压切换按钮直到 i660T 白灯亮起, 再长按切换按钮3~5秒, 白灯快闪后, 此时进入蓝牙对码模式

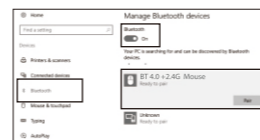
1. Plug the self purchased Bluetooth receiver into the USB interface of the computer
2. Turn the Power switch to ON
3. Press the mode switch button until the BT white indicator is on, and hold the button 3 to 5 seconds until the white indicator flashing, the mouse enter the Bluetooth coding mode.



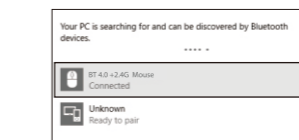
4. 点击电脑的“Bluetooth设备”
Click "Bluetooth device" of the computer



5. 点击“添加或删除蓝牙设备”
Click "Adding or deleting Bluetooth devices"



6. 蓝牙搜索到“BT 4.0 +2.4G Mouse”点击“配对”
The Bluetooth will search and find "BT 4.0 +2.4G Mouse" click "matching"



7. "BT 4.0 +2.4G Mouse" "已连接"可以正常使用了
"BT 4.0 +2.4G Mouse" is "connected", and it's ready to use.

Mac OS 系统蓝牙连接 / Mac OS system

对码前请先操作蓝牙模式安装步骤①②③
Please operate the Bluetooth mode installation steps ① and ② before matching



4. 苹果电脑点击“系统偏好设置”
Click "System preference setting" of the Mac computer



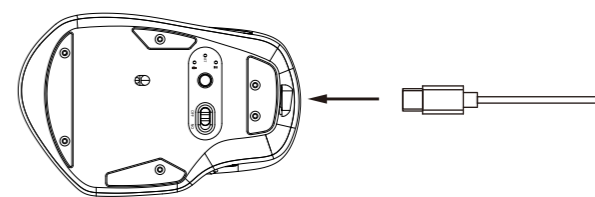
5. “系统偏好设置”点击“蓝牙”
Click "Bluetooth" in "System preference setting"



6. 蓝牙搜索到“BT 4.0 +2.4G Mouse”点击“配对”完成安装可以正常使用
Bluetooth searches "BT 4.0 +2.4G Mouse", click "Pairing", finish installation, Bluetooth can be used normally

有线充电 / Wired charging

1. 电量不足时, 使用配送的USB线连接鼠标充电接口。
When the power is insufficient, use the USB cable to connect the mouse charging interface.



2. 充电线连接到电脑的USB, 充电时顶部灯孔亮红灯, 充电过程约2-3小时左右(电池电压低至3.2V时闪烁红灯, 此时电池需要充电, 充电时亮红灯, 充满电红灯熄灭)

The charging line is connected to the USB port of the computer, the top indicator turns on in red when charging, the charging process is about 2-3 hours (when the battery voltage is low to 3.2V, the indicator flashes in red, then the battery needs to be charged, when charging, the indicator turns on in red, after charging full, the indicator turns off)