

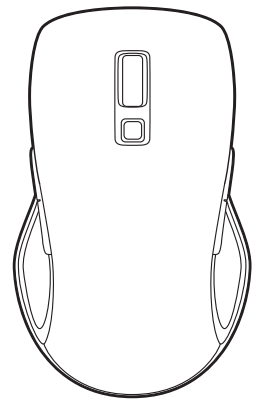


Logitech® Wireless Mouse M560

罗技® 无线鼠标 M560

Setup Guide

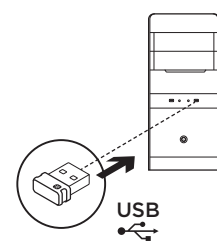
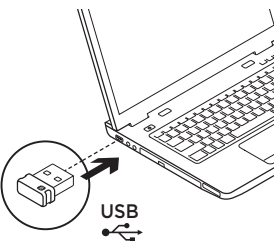
设置指南



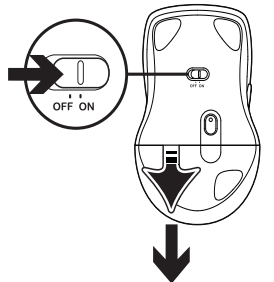
unifying™



1

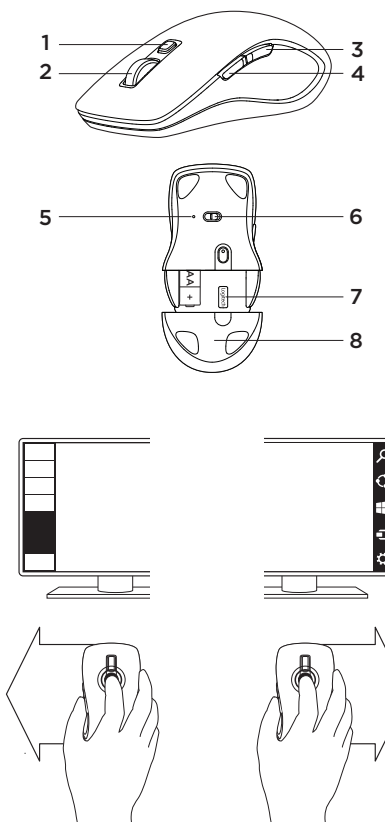
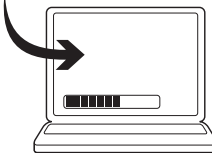


2



3

www.logitech.com/downloads



English

Mouse features

Windows® 8 features

1. Windows 8 edge menu button:

- Hold down the button and move your mouse to the **left** to display the Windows 8 **App bar**. Release to select.
- Hold down the button and move your mouse to the **right** to display the Windows 8 **Charms**. Release to select.

2. Scroll wheel:

- Press the wheel down to switch between hyper-fast scrolling and click-to-click scrolling.
- Tilt the wheel left/right for Internet back/forward.

3. Show the Windows desktop.

4. Show the Windows 8 Start screen.

For more Windows 8 mouse features and options, download the latest software from www.logitech.com/downloads.

Windows 7 features (software required)

1. Application switcher.

2. Scroll wheel:

- Press the wheel down to switch between hyper-fast scrolling and click-to-click scrolling.
- Tilt the wheel left/right for horizontal scroll.

3. Back button.

4. Forward button.

To activate the Windows 7 features you must download the latest software from www.logitech.com/downloads.

5. Battery LED. Illuminates red when battery power is low, green when battery power is good.

6. On/Off slider switch.

7. Receiver storage.

8. Battery door.

简体中文

鼠标功能

Windows® 8 功能

1. Windows 8 侧边菜单按钮:

- 按住按钮并向左移动鼠标可显示 Windows 8 应用程序栏。释放按钮后可进行选择操作。
- 按住按钮并向右移动鼠标可显示 Windows 8 Charms。释放按钮后可进行选择操作。

2. 滚轮:

- 按下滚轮可在超快滚动和逐击滚动模式之间进行切换。
- 向左/右倾斜滚轮可使网页后退/前进。

3. 显示 Windows 桌面。

4. 显示 Windows 8 开始屏幕。

如欲了解鼠标更多的 Windows 8 功能和选项, 请登录 www.logitech.com/downloads 下载最新软件。

Windows 7 功能 (需安装软件)

1. 切换应用程序。

2. 滚轮:

- 按下滚轮可在超快滚动和逐击滚动模式之间进行切换。
- 向左/右倾斜滚轮可实现横向滚动。

3. 后退按钮。

4. 前进按钮。

如要激活 Windows 7 功能, 必须从 www.logitech.com/downloads 下载最新软件。

5. 电池 LED 指示灯。电池电量低时亮起红灯, 电池电量充足时亮起绿灯。

6. 开启/关闭滑动开关。

7. 接收器收存。

8. 电池盖。



www.logitech.com

© 2014 Logitech. All rights reserved. Logitech, the Logitech logo, and other Logitech marks are owned by Logitech and may be registered. Microsoft, Windows, and the Windows logo are trademarks of the Microsoft group of companies. All other trademarks are the property of their respective owners. Logitech assumes no responsibility for any errors that may appear in this manual. Information contained herein is subject to change without notice.

版权所有 © 2014 年罗技。罗技、罗技标志、Logitech 和其他罗技商标均归罗技所有，并或已注册。Microsoft、Windows 和 Windows 标志是 Microsoft 集团公司的商标。所有其它商标均是其各自所有者的财产。罗技对于本手册中可能出现的任何错误不承担任何责任。本手册中包含的信息如有更改，恕不事先通知。

620-006151.003



English

Logitech® Unifying technology connects up to six compatible Logitech mice and keyboards to the same receiver, using only one USB port for multiple devices. To learn more, visit **www.logitech.com/unifying**.

简体中文

罗技® Unifying 技术可将多达六个兼容的罗技鼠标和键盘连接至相同接收器，只需一个 USB 端口就可连接多个设备。如欲了解更多信息，请访问 **www.logitech.com/unifying**。

English

Troubleshooting

Mouse is not working?

- Restart the mouse by turning it off and then back on?
- If the battery LED illuminates red, replace the battery.
- Check that the Unifying receiver is properly connected to a USB port.
- If the Unifying receiver is plugged into a USB hub, try plugging it directly into a USB port on your computer.
- Try a different surface. Remove metallic objects between the mouse and the Unifying receiver.
- Keep the Unifying receiver as far as possible from other USB 3.0 devices, by plugging it on a USB port the opposite side of the computer from the USB 3.0 device, or by using a shielded USB-extender cable.
- A shielded USB-extender cable is available for Logitech customers experiencing connection problems at **www.logitech.com/usbextender**.

简体中文

疑难解答

鼠标不工作？

- 关闭并重启鼠标。
- 如果电池 LED 指示灯亮起红灯，请更换电池。
- 检查 Unifying 接收器是否正确地插入 USB 端口。
- 如果 Unifying 接收器插入的是 USB 集线器，请尝试将其直接插入电脑的 USB 端口。
- 尝试其他表面。移除鼠标和 Unifying 接收器之间的金属物体。
- 使 Unifying 接收器尽量远离其他 USB 3.0 装置，可将其插入电脑上位于 USB 3.0 装置相反一侧的 USB 端口，或使用屏蔽性良好的 USB 延长线。
- 遇有连接问题的罗技客户，可通过 **www.logitech.com/usbextender** 获得屏蔽性良好的 USB 延长线。

Table of Toxic and Hazardous Substances/Elements and their Content

产品中有毒有害物质或元素的名称及含量
根据中国<<电子信息产品污染控制管理办法>>

Control Device 鼠标						
有毒有害物质或元素						
部件名称	铅 (Pb)	汞 (Hg)	镉 (Cd)	六价铬 (Cr(VI))	多溴联苯 (PBB)	多溴二苯醚 (PBDE)
电缆 Cable	X	○	○	○	○	○
电路板组件 PWAs	X	○	○	○	○	○
塑料外壳 Plastic enclosure	○	○	○	○	○	○
塑料部件 Plastic parts	○	○	○	○	○	○
金属部件 Metal parts	X	○	○	○	○	○

○ = 表示该有毒有害物质在该部件所有均质材料中的含量均在 SJ/T11363-2006 标准规定的限量要求以下。

X = 表示该有毒有害物质至少在该部件的某一均质的含量超出 SJ/T11363-2006 标准规定的限量要求。

表中标有“X”的所有部件都符合欧盟 RoHS 法规

“欧洲议会和欧盟理事会 2003 年 1 月 27 日关于电子电器设备中限制使用某些有害物质的 2002/95/EC 号指令”

注：环保使用期限的参考标取决于产品正常工作的温度和湿度等条件