

# Lenovo

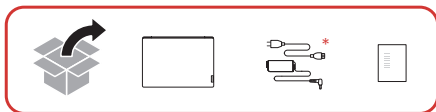
## 小新 Air-14 2019

### 设置指南

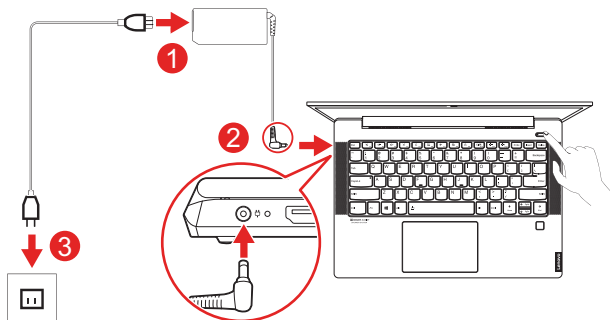
The Lenovo logo, consisting of the word "Lenovo" in white, sans-serif font, oriented vertically within a red rectangular background.

Lenovo

## 初始设置

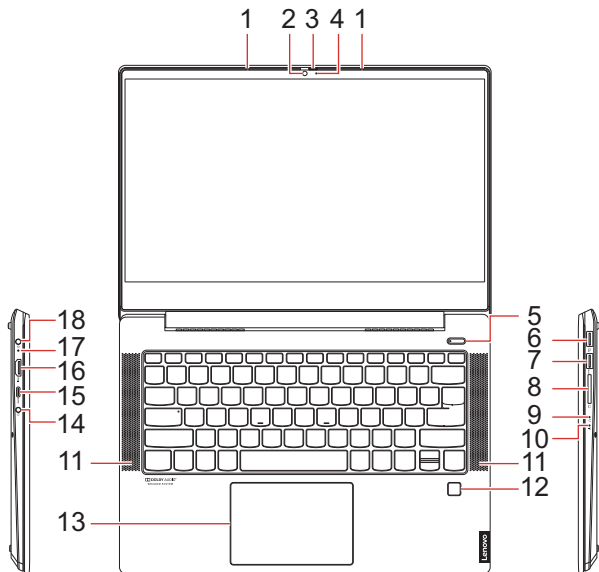


\* AC 电源适配器因型号而异。



注：将计算机连接到电源时，步骤因型号而异。

# 概述



- |                         |                  |
|-------------------------|------------------|
| 1. 麦克风                  | 10. 电源指示灯        |
| 2. 摄像头                  | 11. 扬声器          |
| 3. 遮挡盖                  | 12. 指纹阅读器 *      |
| 4. 摄像头指示灯               | 13. 触摸板          |
| 5. 电源按钮                 | 14. 音频接口         |
| 6. Always On USB 3.0 接口 | 15. USB-C™ 接口    |
| 7. USB 3.0 接口           | 16. HDMI™ 接口     |
| 8. SD-card 插槽           | 17. 电池 / 充电状态指示灯 |
| 9. Novo 按钮              | 18. 电源接口         |

\* 仅限特定型号

**First Edition (December 2018)**

**© Copyright Lenovo 2018.**

LIMITED AND RESTRICTED RIGHTS NOTICE: If data or software is delivered pursuant to a General Services Administration "GSA" contract, use, reproduction, or disclosure is subject to restrictions set forth in Contract No. GS-35F-05925.

**Reduce | Reuse | Recycle**



Printed in China

PN: SP40T82782